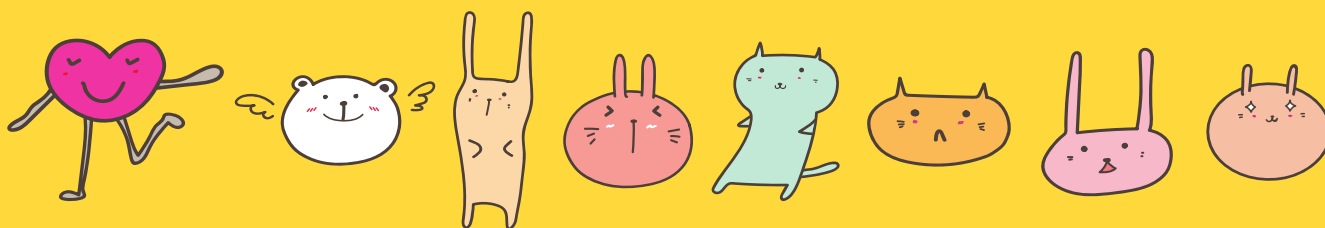


# ANIMALES



Recopilación de actividades para trabajar los animales.

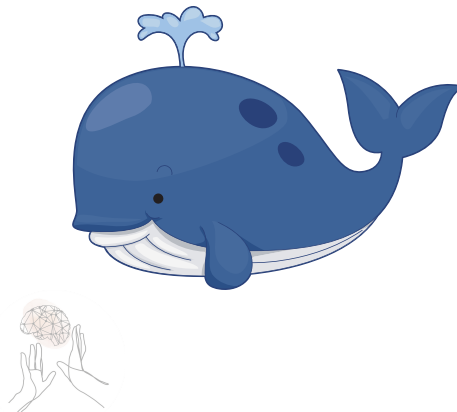
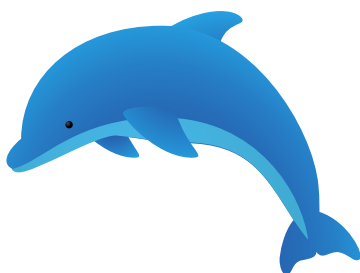
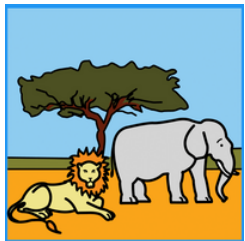
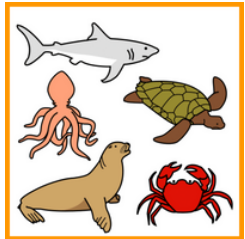


1. CLASIFICACIÓN DE ANIMALES MARINOS, SELVA Y GRANJA (TEACCH).
2. AVISPAS Y AVISPERO (TEACCH).
3. DECORAR AVISPA, HORMIGA, SERPIENTE, GALLINA, CAMALEÓN, JIRafa, LÉON (MOTRICIDAD FINA Y SENSORIAL).
4. PICTOGRAMAS TALLER DEL GUSTO (MIEL).
5. HORMIGAS Y HORMIGUERO (TEACCH).
6. LAS HORMIGAS (NUMERACIÓN).
7. LECTOESCRITURA.

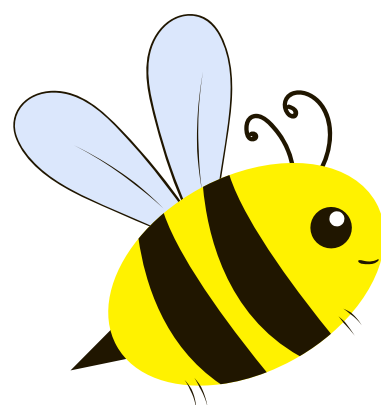
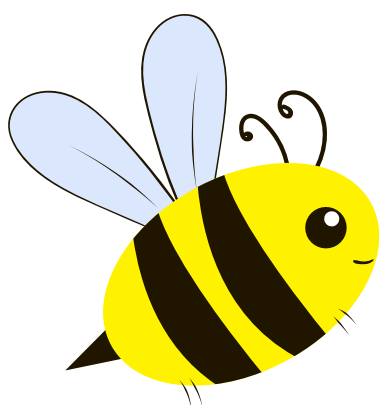
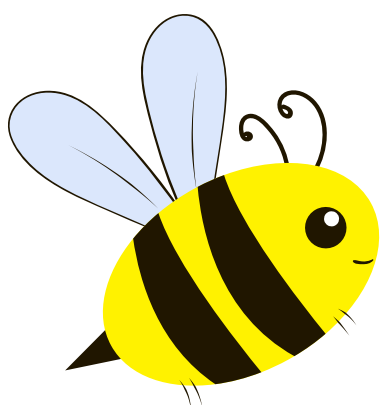
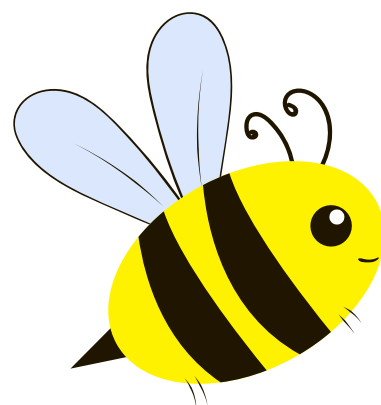
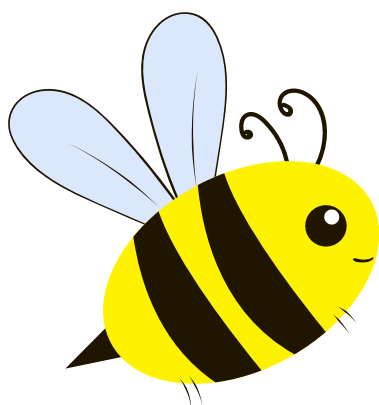
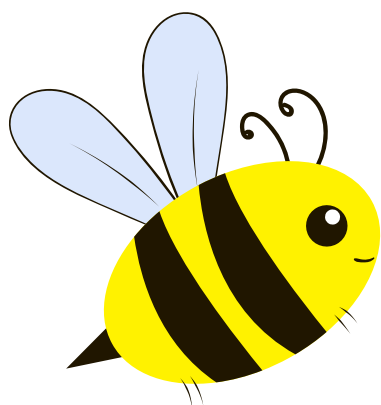
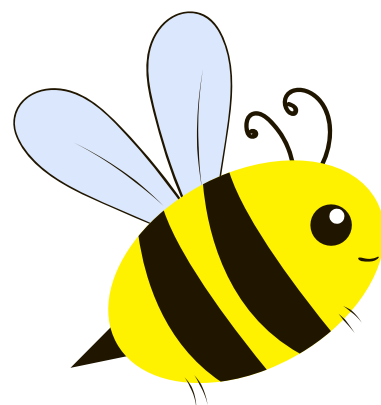
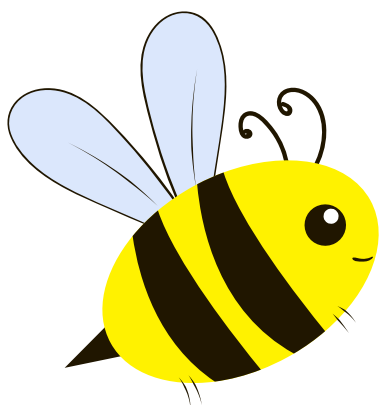
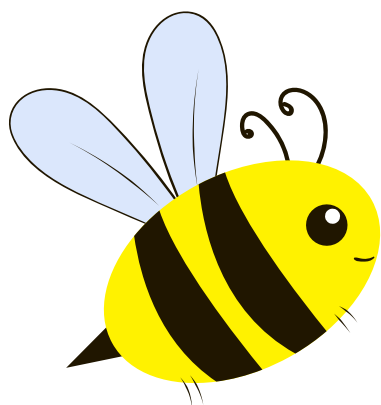




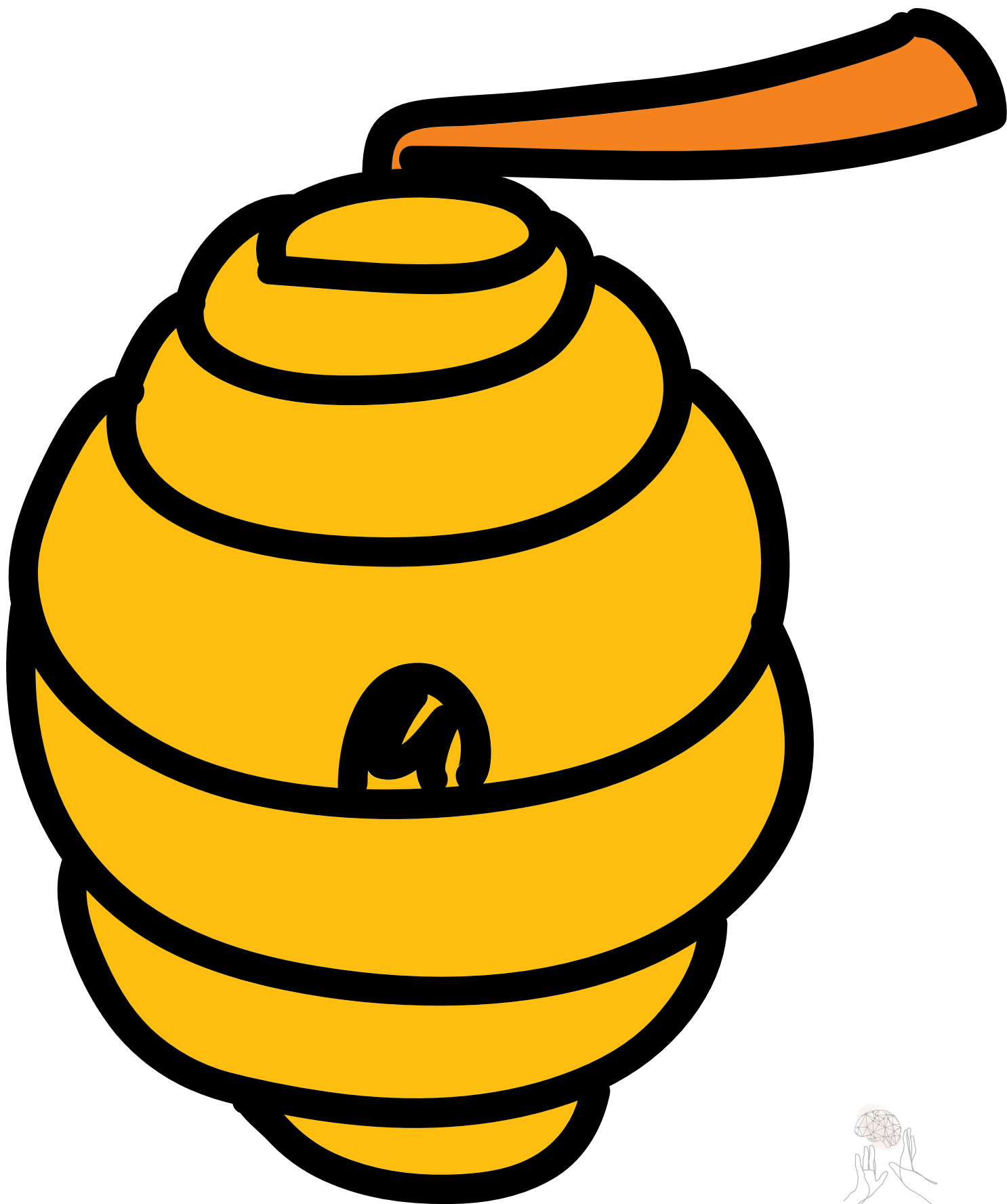
# CLASIFICA LOS ANIMALES



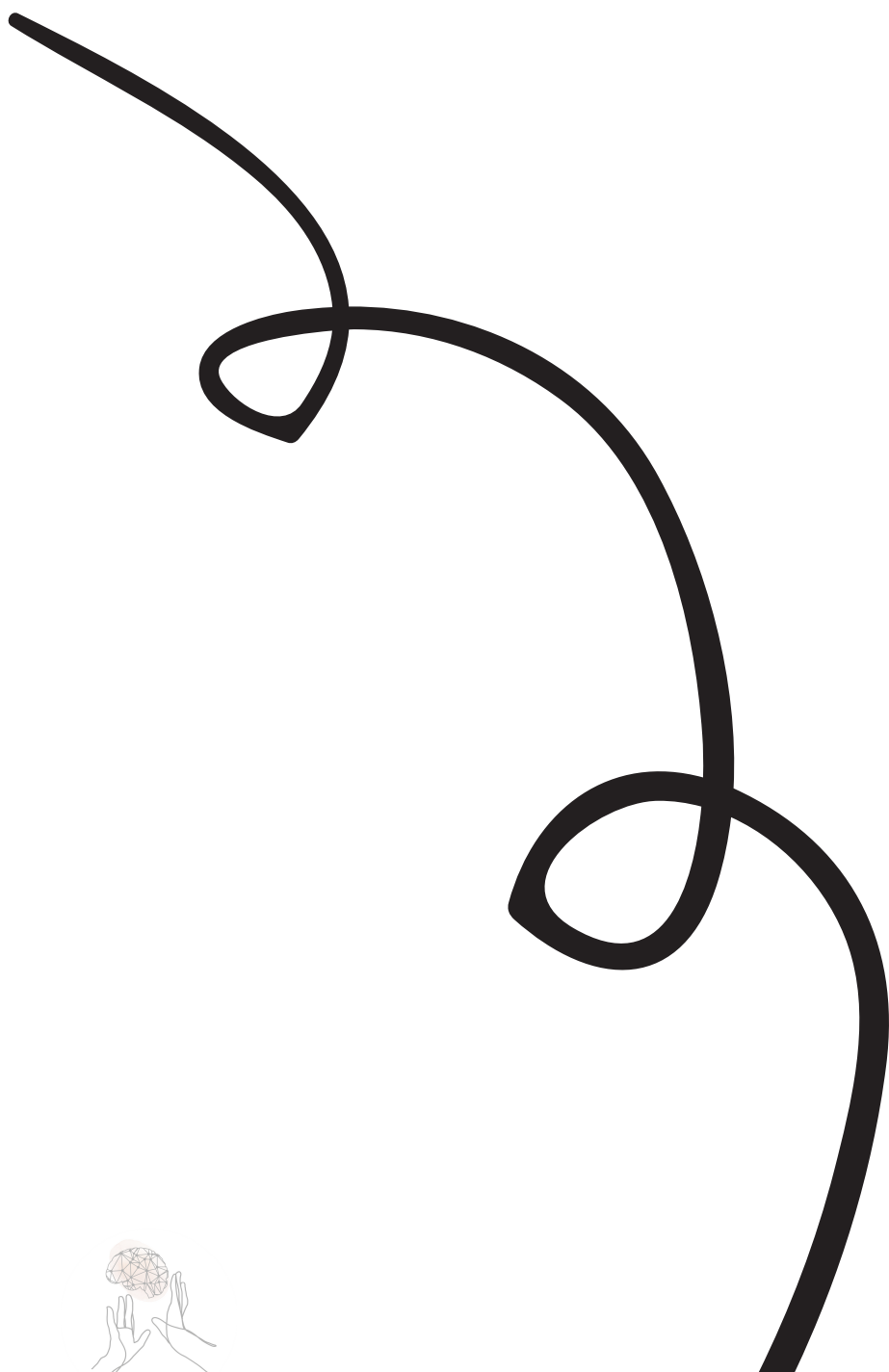
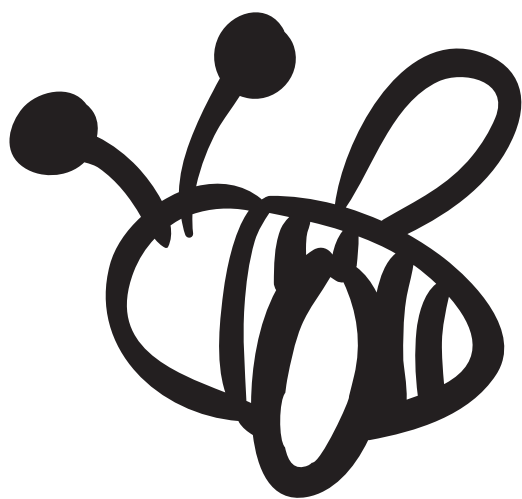
# AVISPAS PARA ACTIVIDAD TEACCH



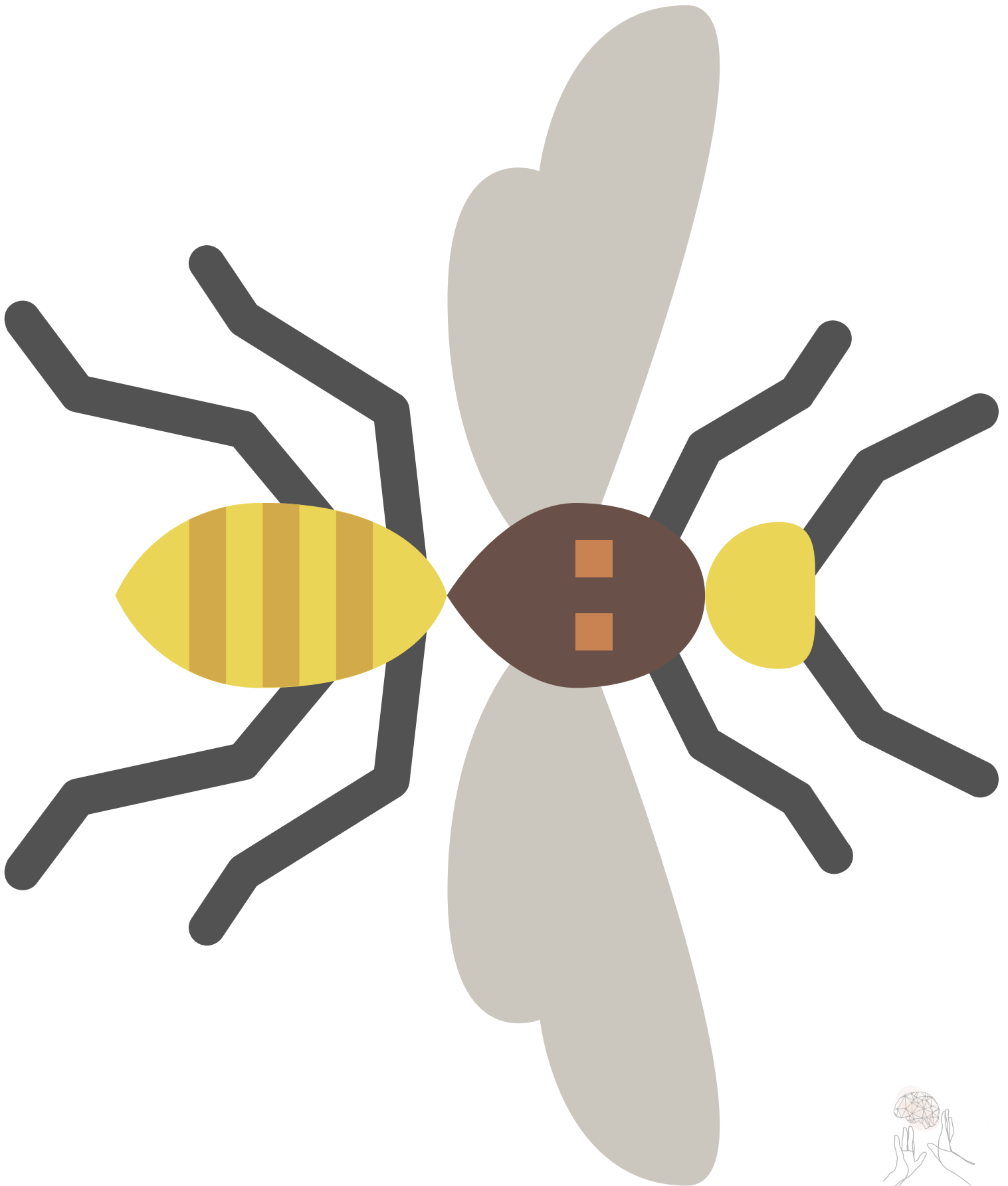
# COLMENA PARA ACTIVIDAD TEACCH



# AVISPA: MOTRICIDAD FINA



# AVISPA TEXTURAS



# PICTOGRAMAS: SENTIDO DEL GUSTO

MIEL



DULCE



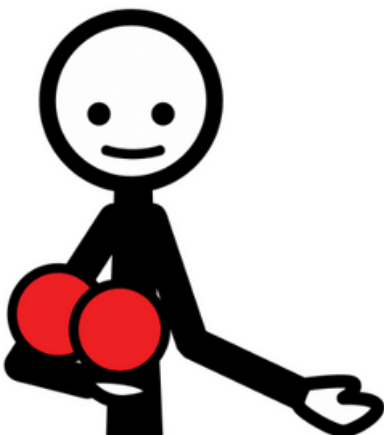
GUSTAR



NO GUSTAR



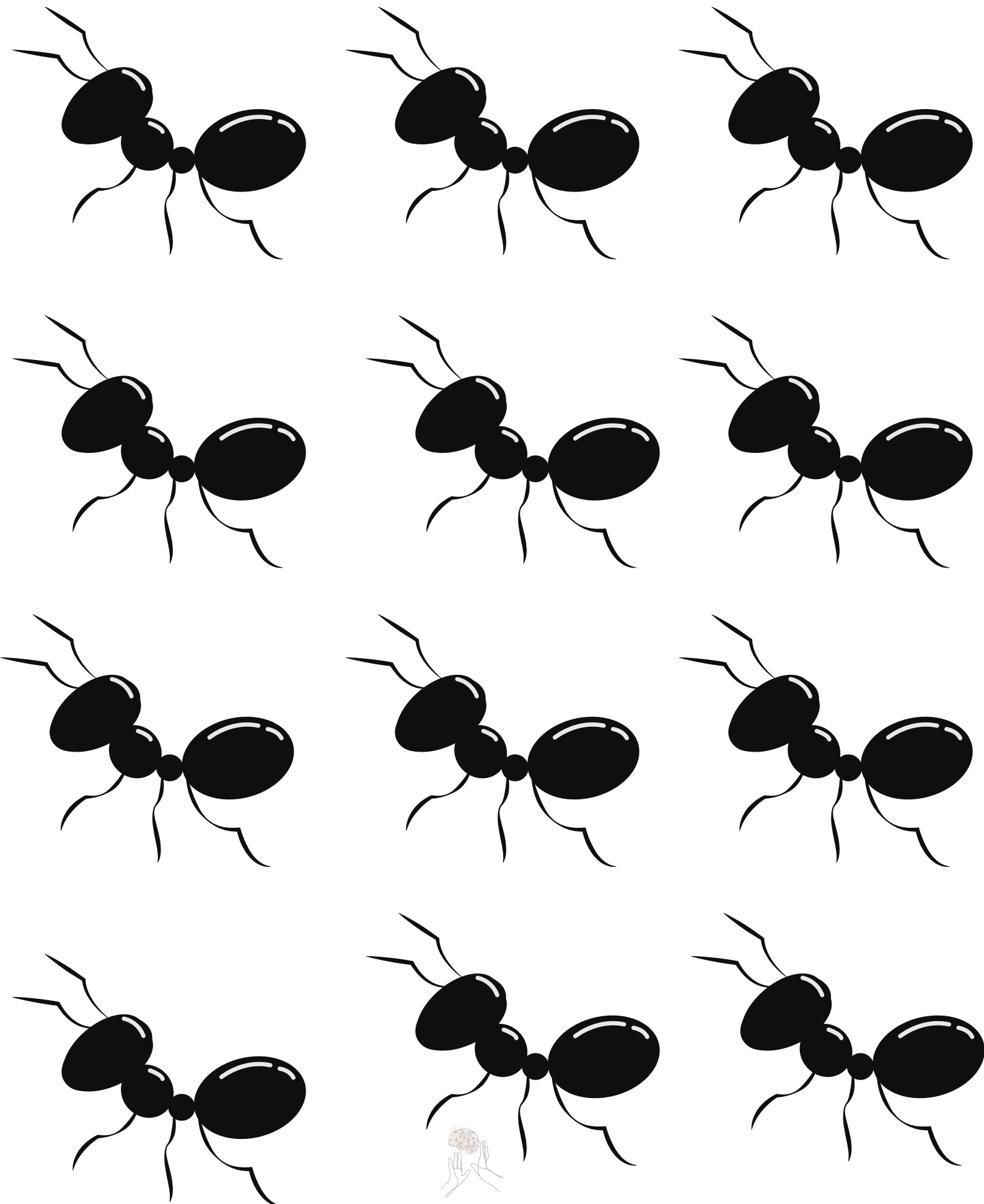
QUIERO MÁS



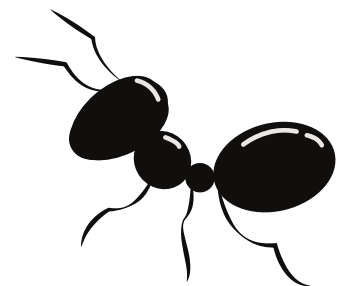
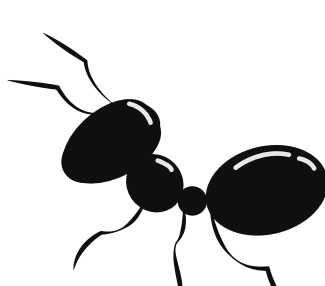
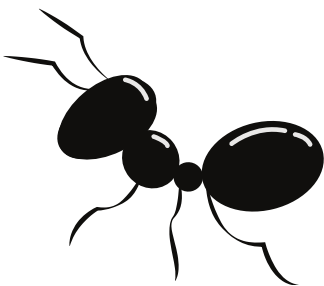
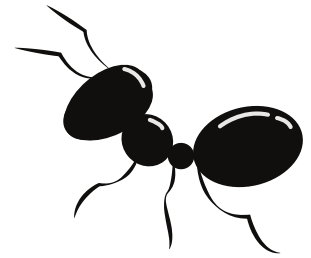
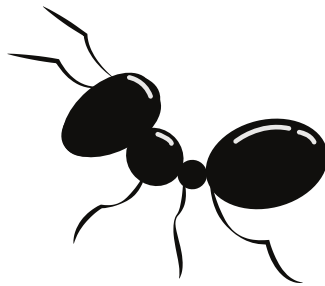
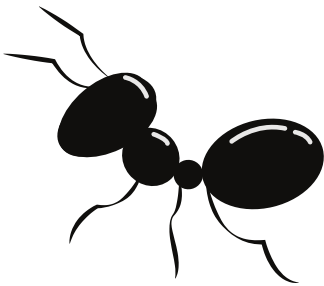
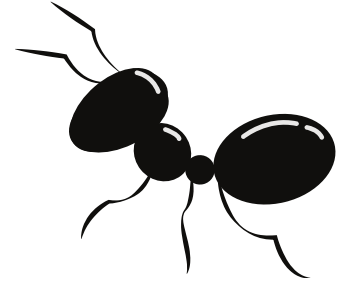
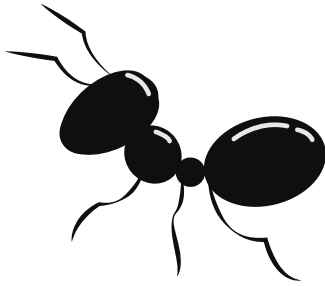
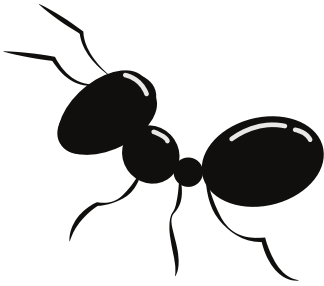
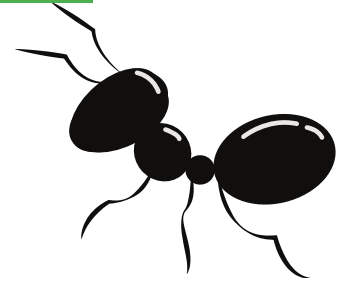
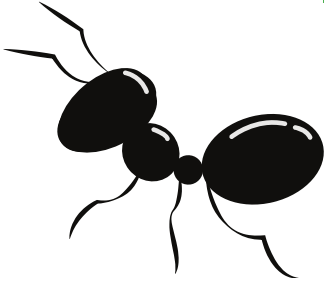
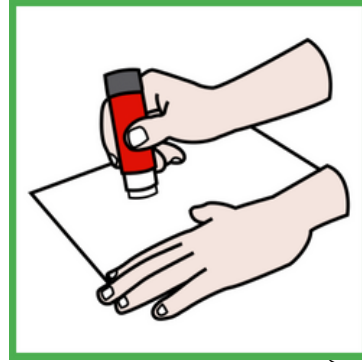
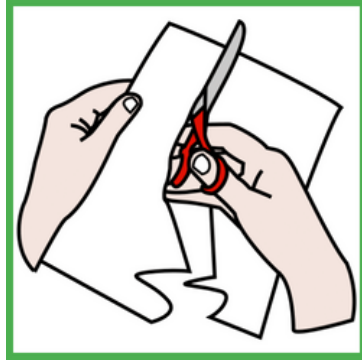
NO QUIERO MÁS



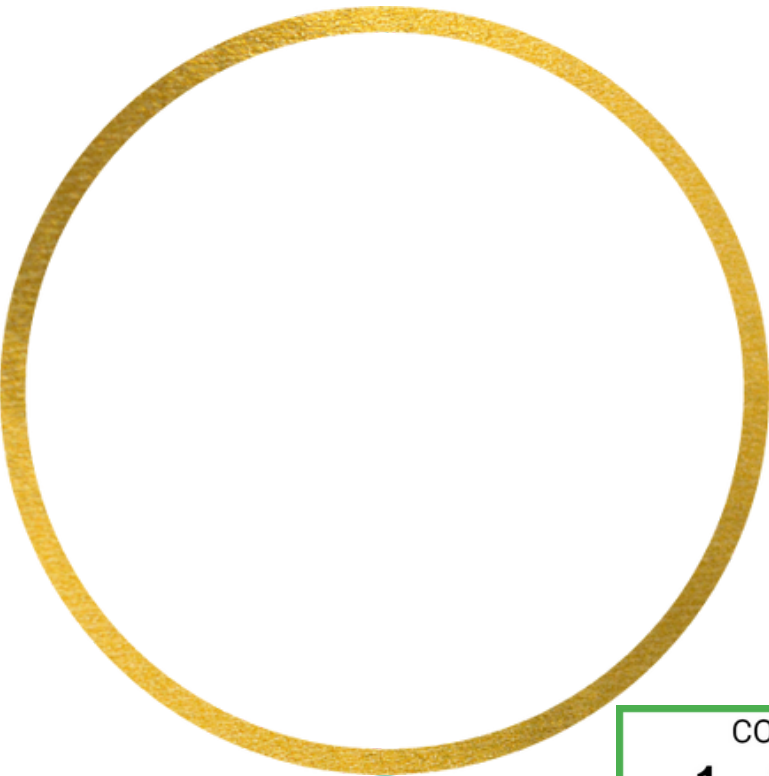
# HORMIGAS TEACCH



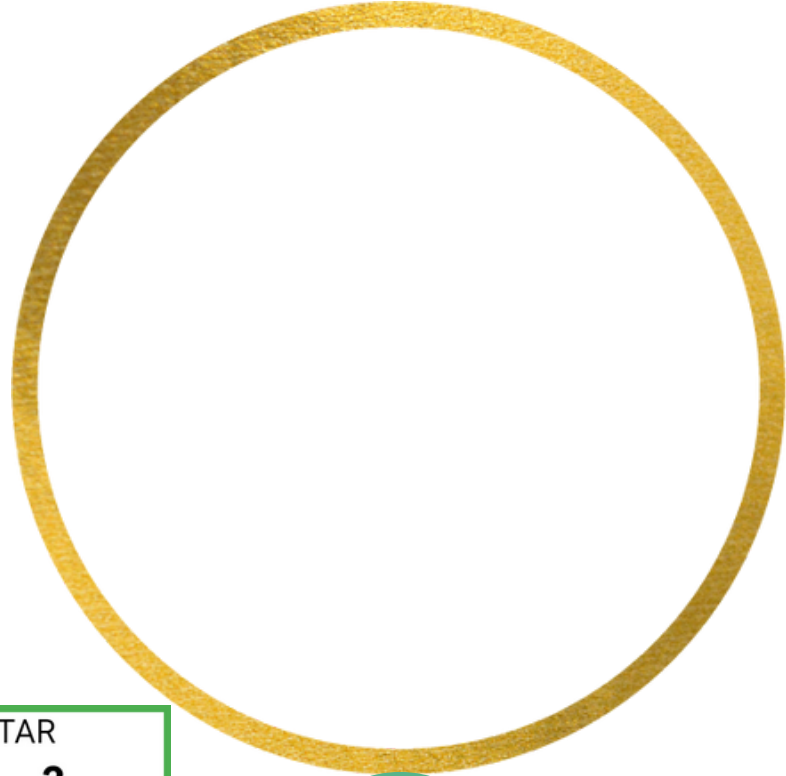
# PARA RECORTAR Y PEGAR



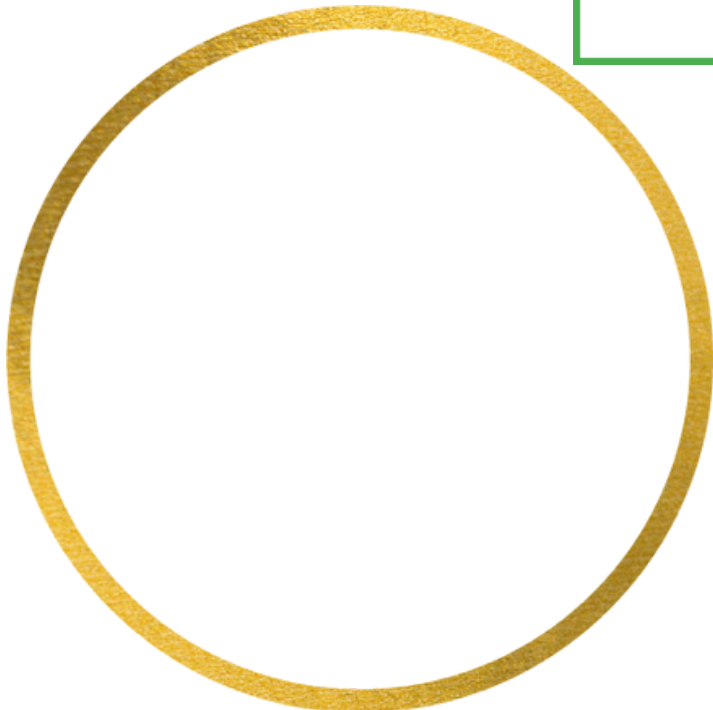
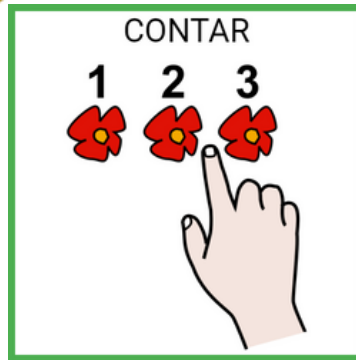
# CANTIDAD: PEGAMOS LAS HORMIGAS



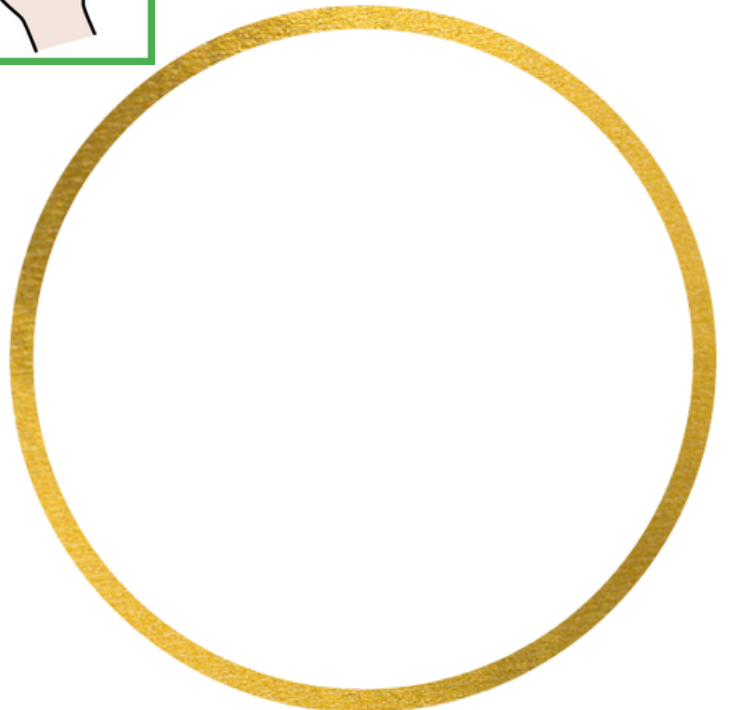
4



3



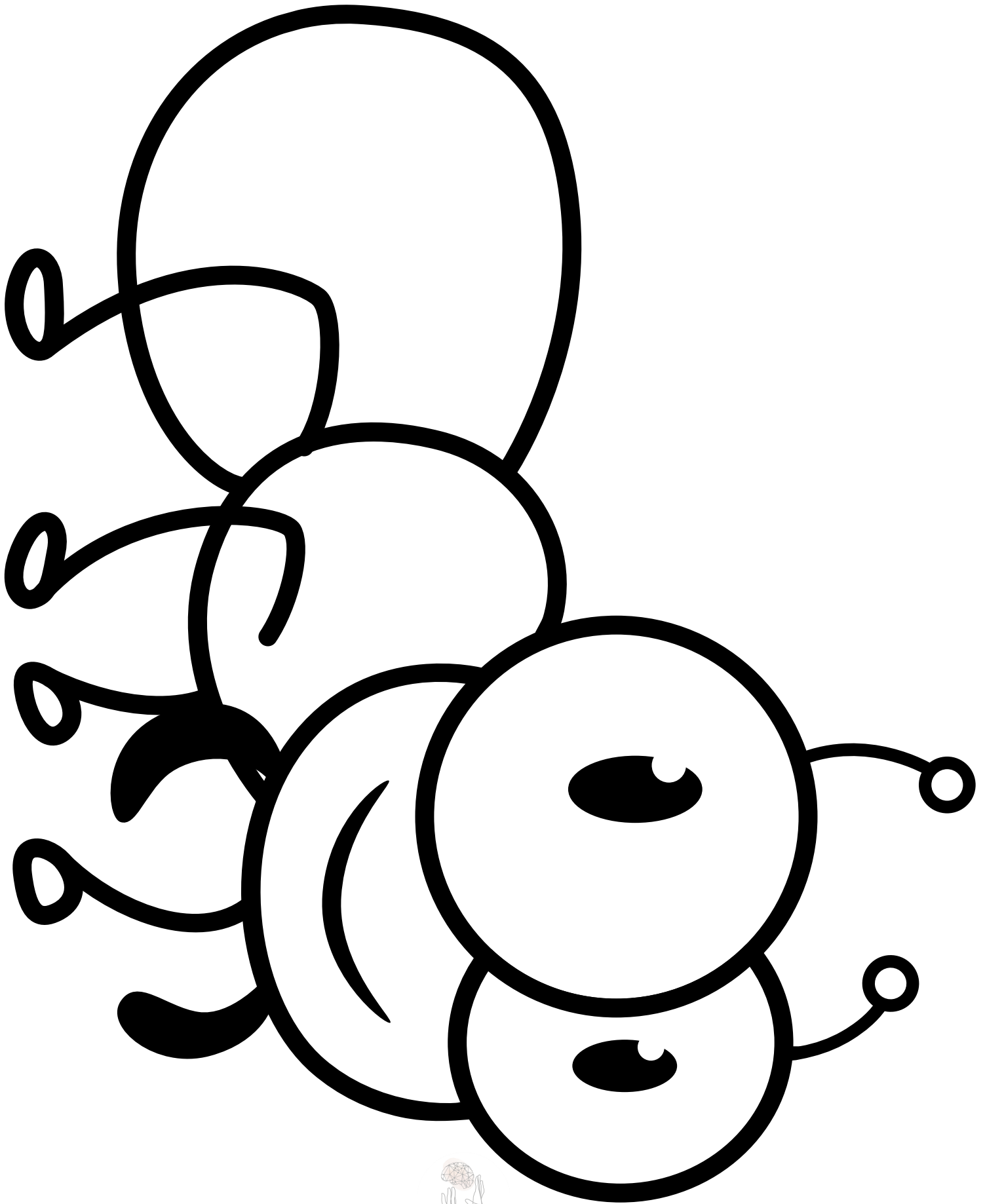
2



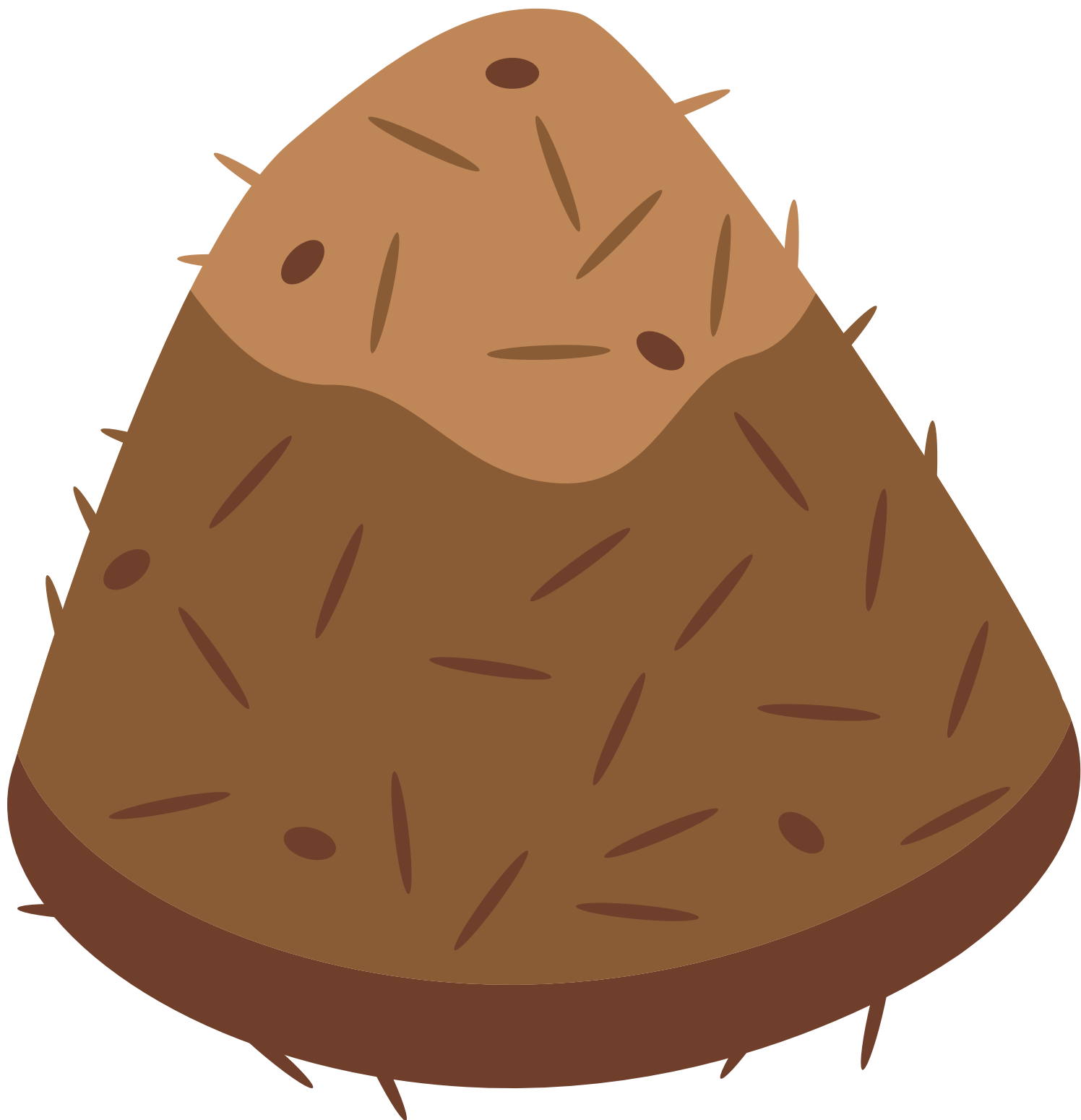
1



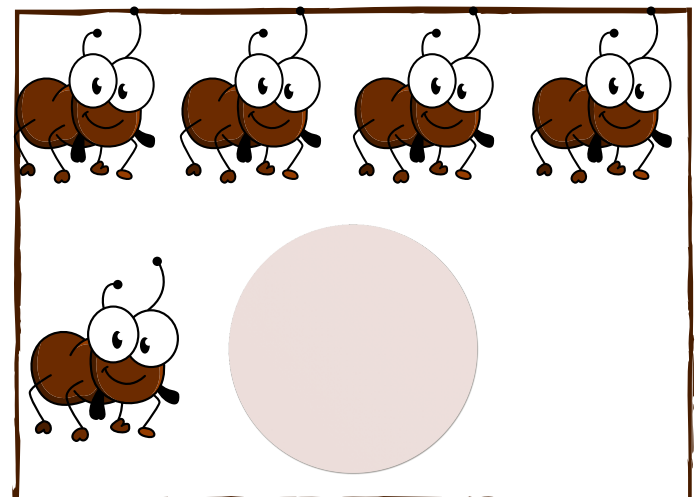
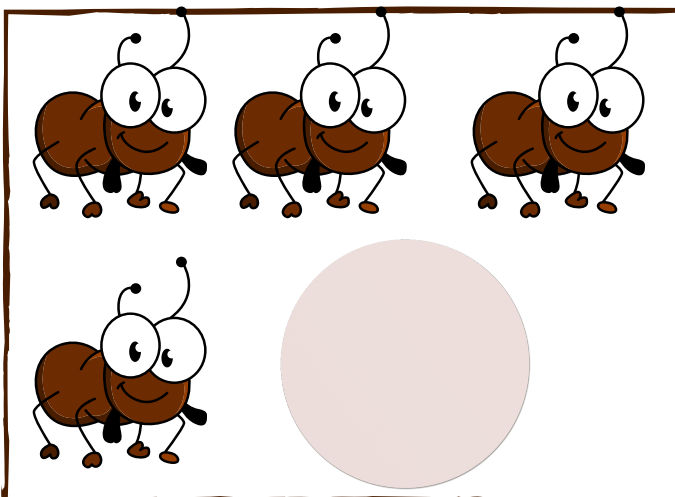
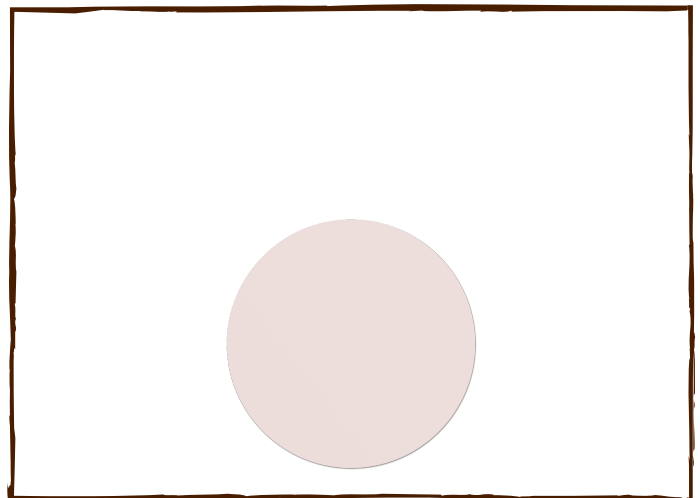
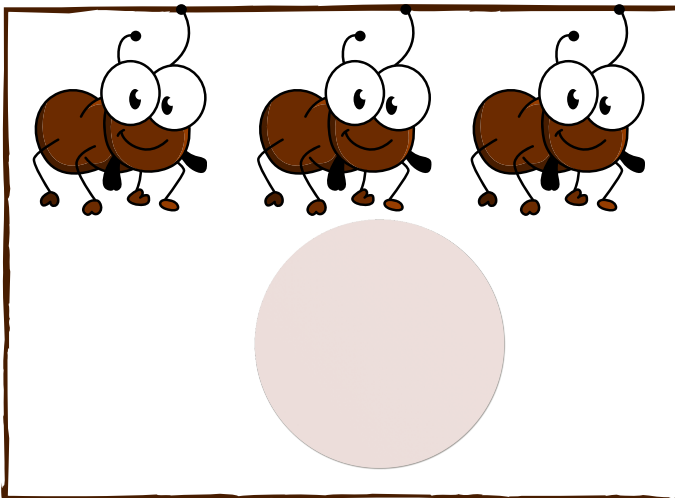
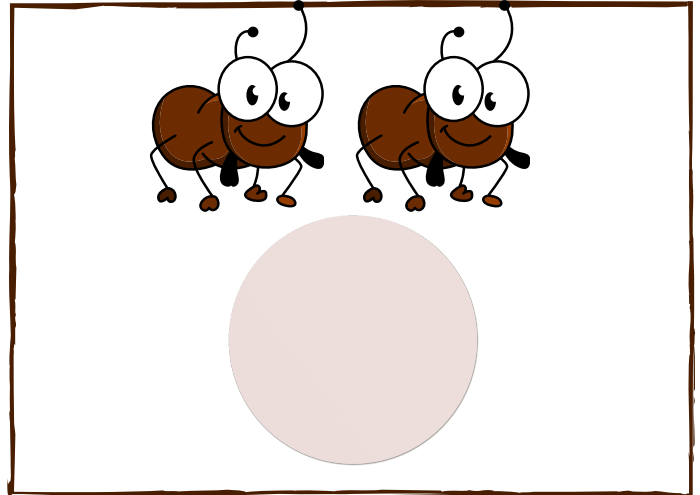
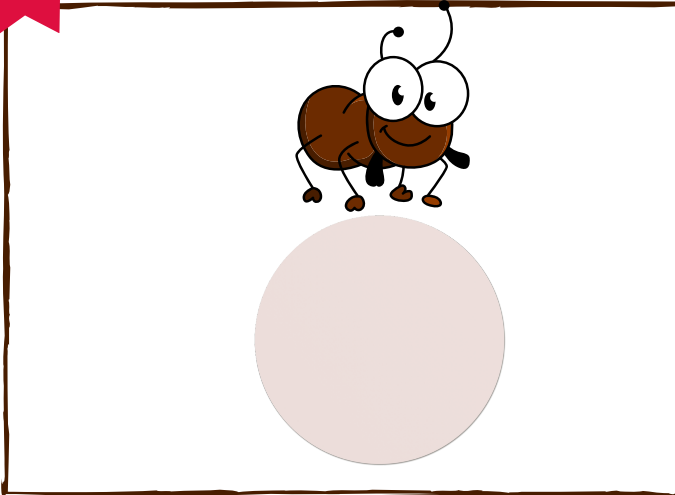
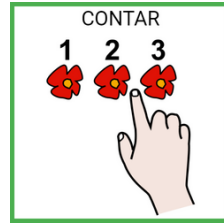
# HORMIGA : SENSORIAL



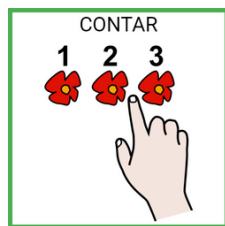
# HORMIGUERO: TEACCH Y SENSORIAL



# CONTAMOS



# CONTAMOS



1 3

4 2

5 3

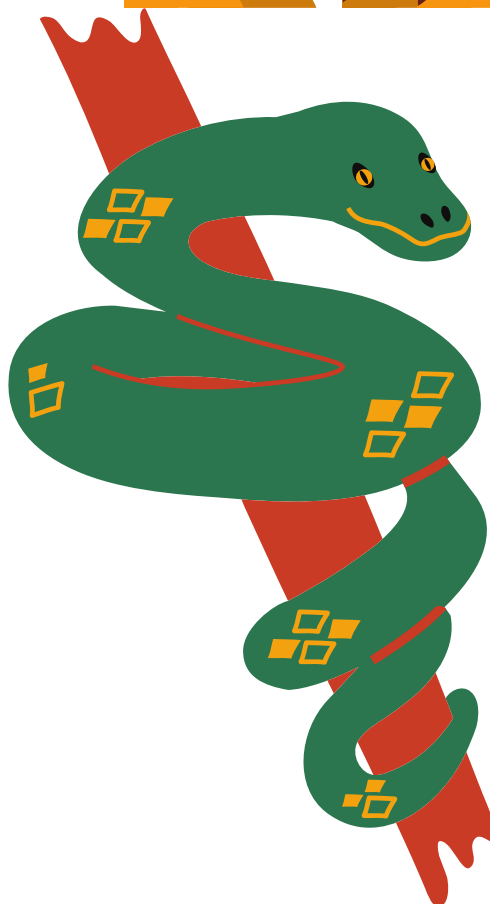
1 0

2 4

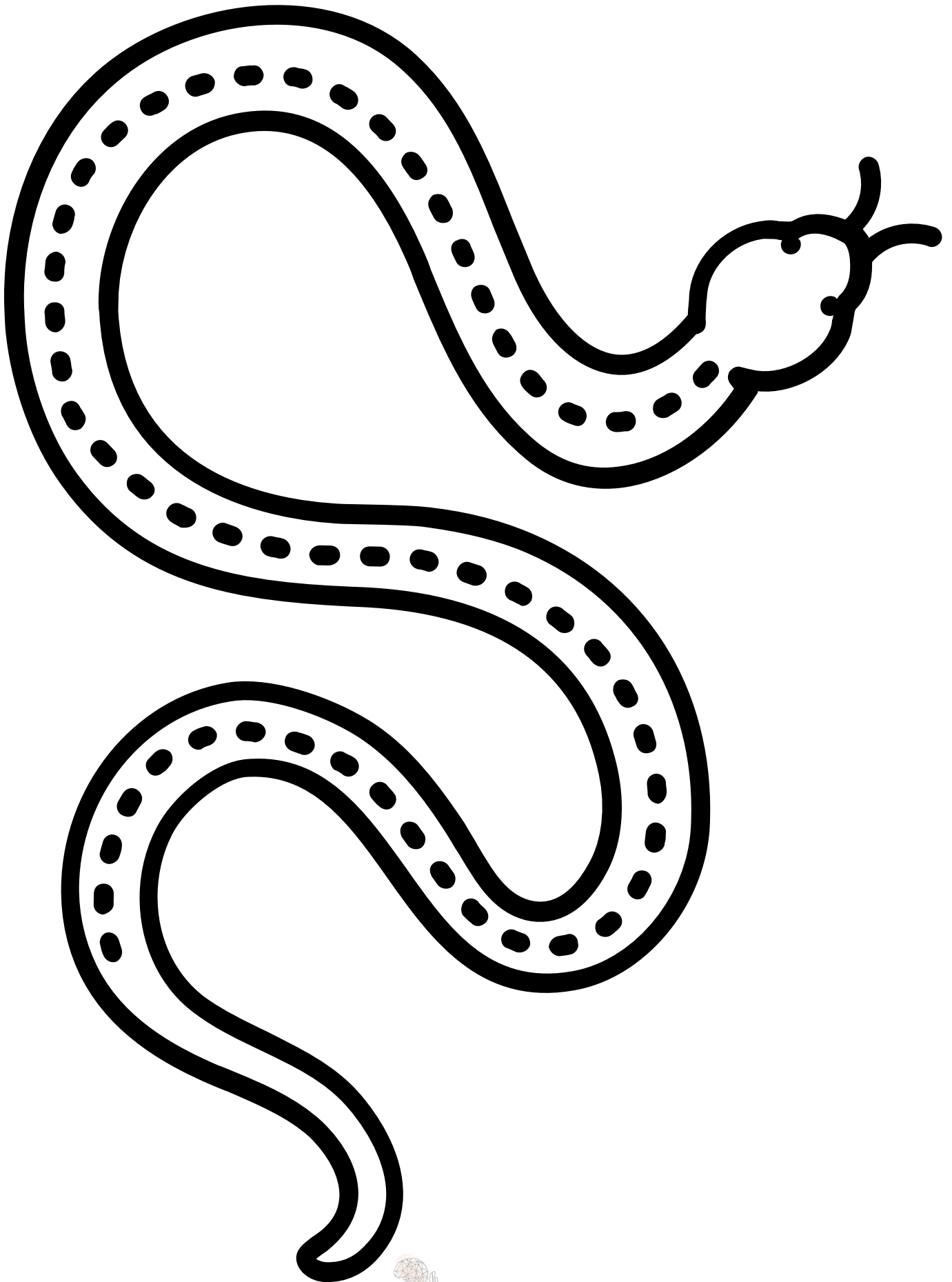
2 5



# ANIMALES SALVAJES: TEACCH



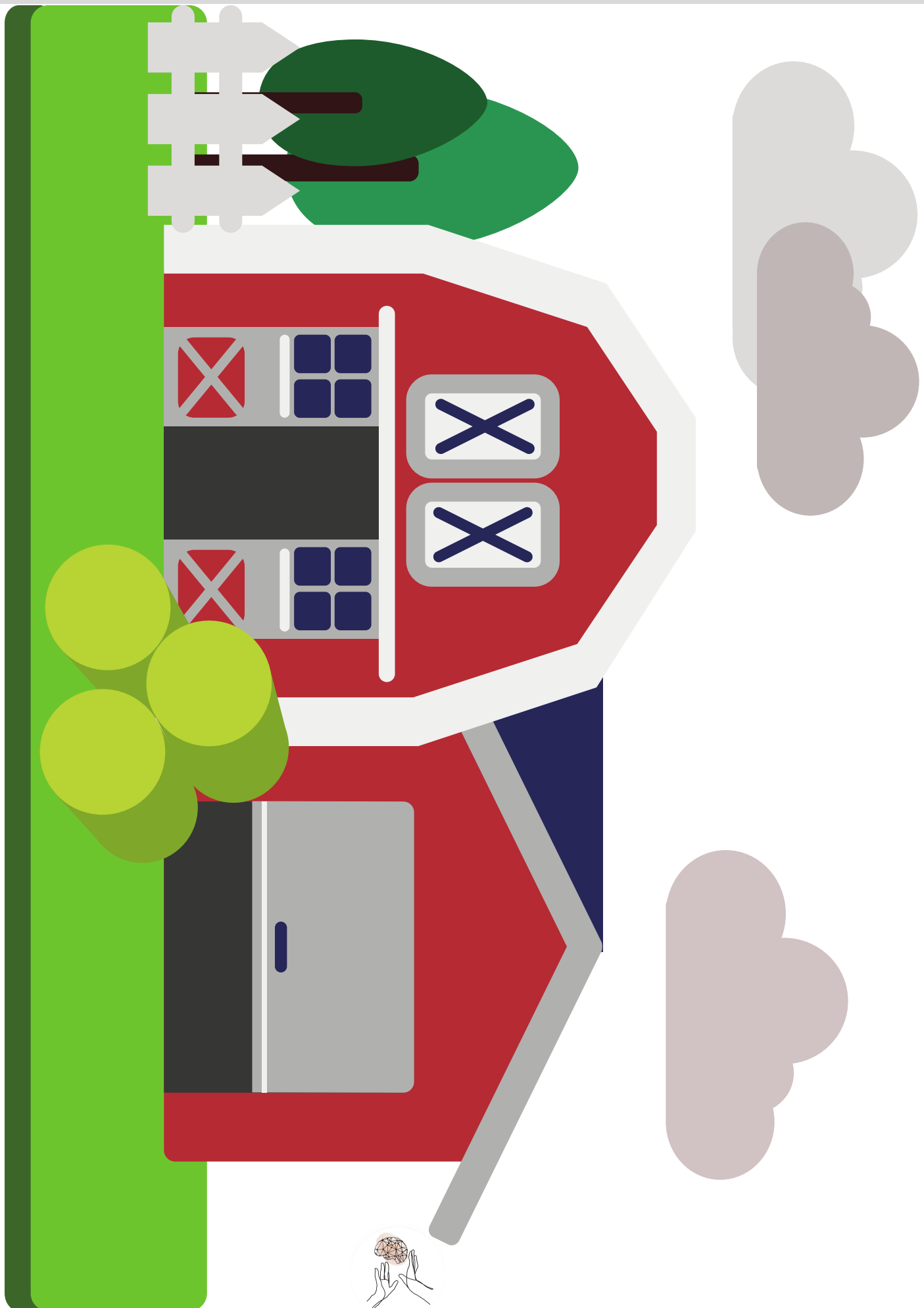
# SERPIENTE SENSORIAL. MOTRICIDAD FINA



# SELVA: TEACCH Y SENSORIAL



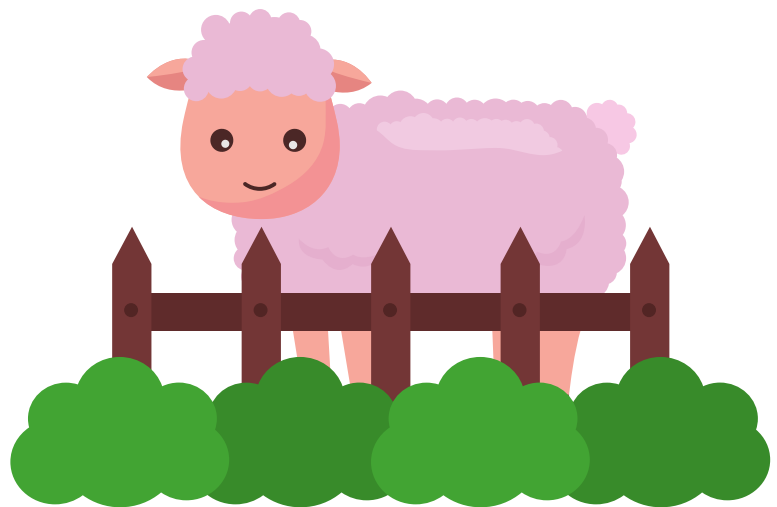
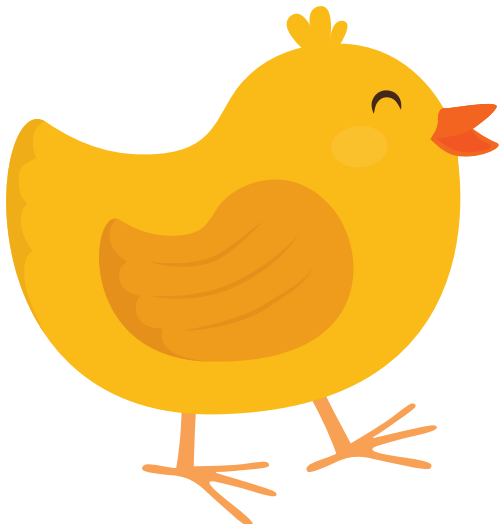
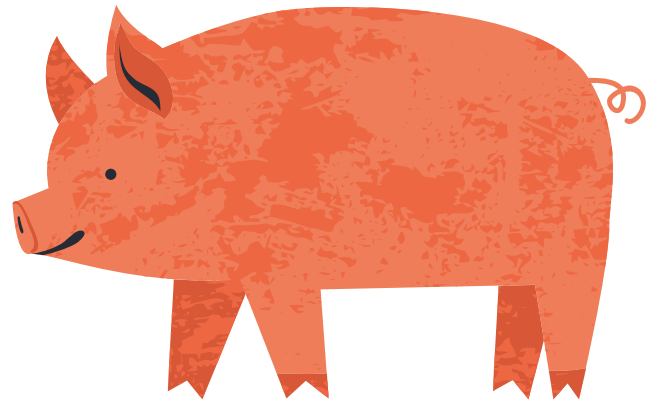
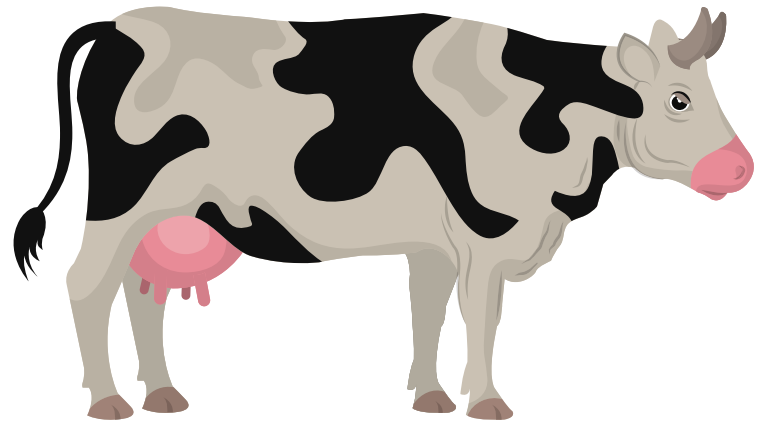
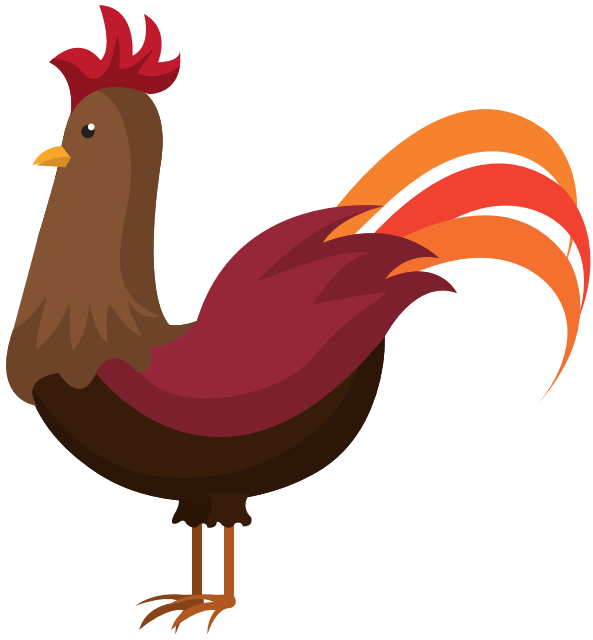
# GRANJA TEACCH Y SENSORIAL



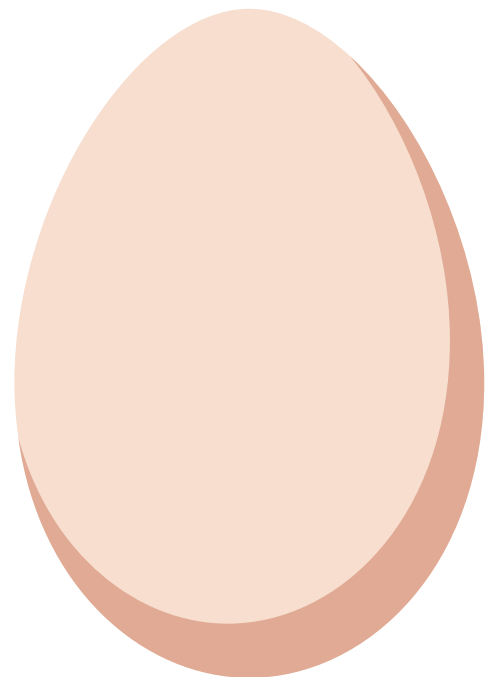
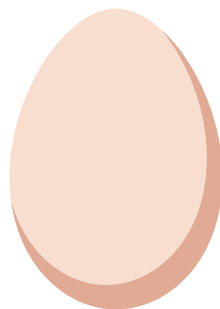
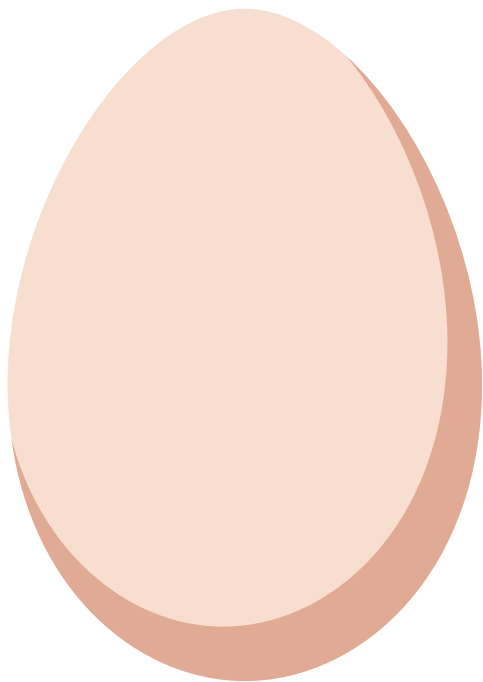
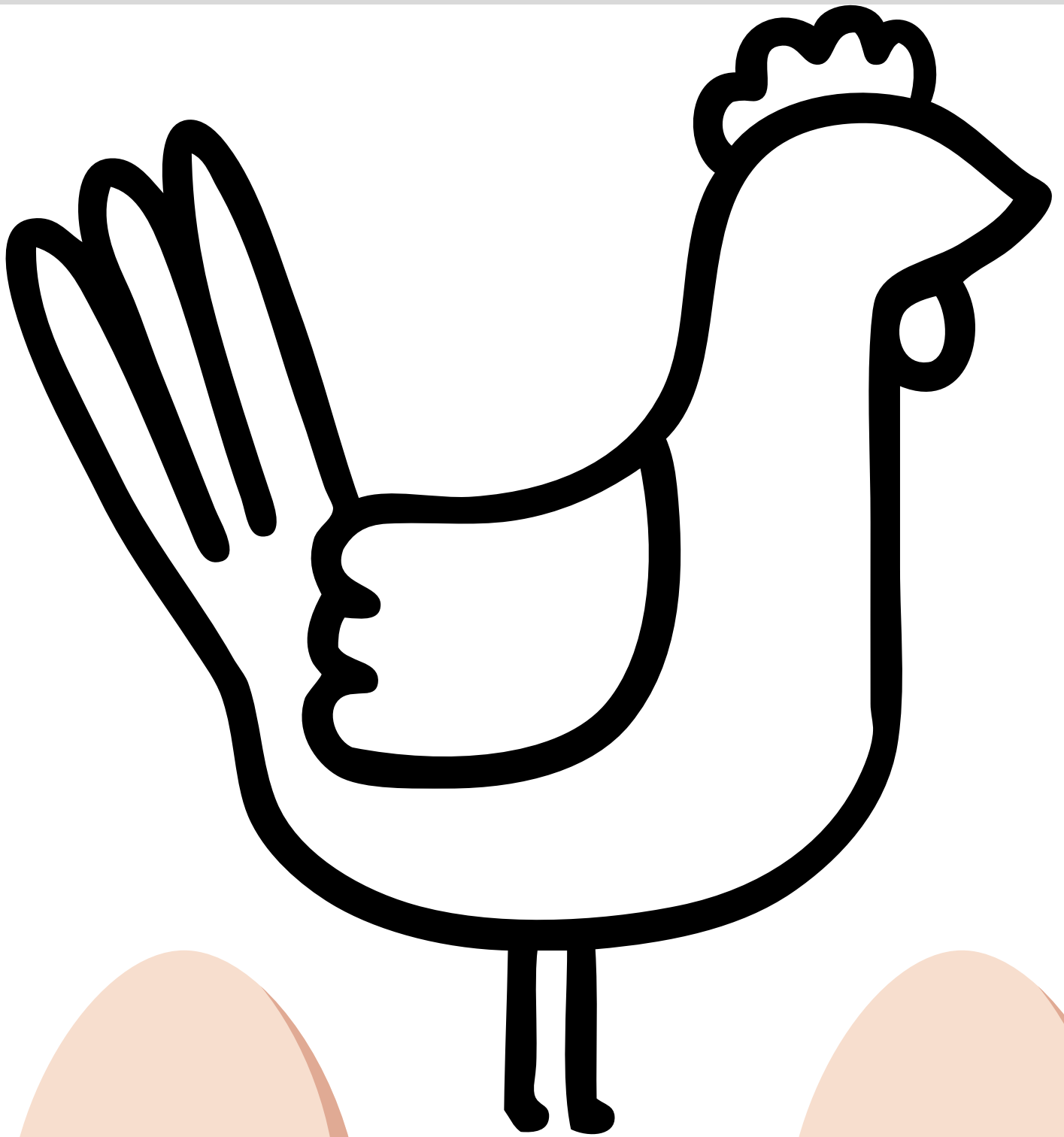
# GRANJA Y SELVA: TEACCH



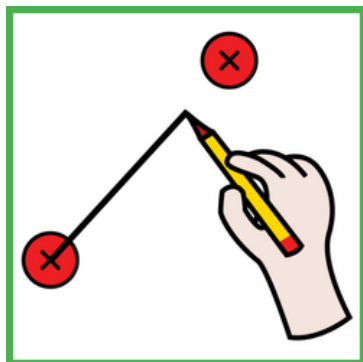
# ANIMALES GRANJA: TEACCH



# GALLINA: SENSORIAL



# LOS ANIMALES



PERRO ●

HORMIGA ●

ABEJA ●

GALLINA ●

GIRAFA ●

CERDO ●

VACA ●

SERPIENTE ●

MONO ●

● SERPIENTE

● MONO

● VACA

● CERDO

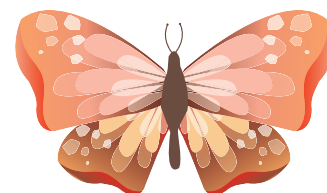
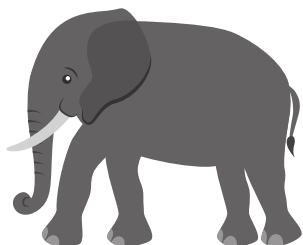
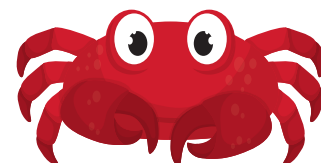
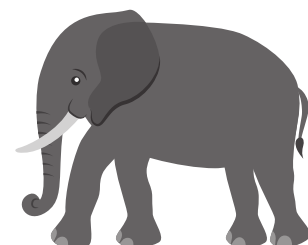
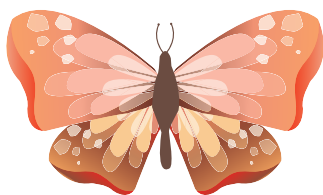
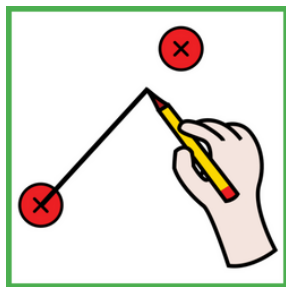
● PERRO

● HORMIGA

● ABEJA

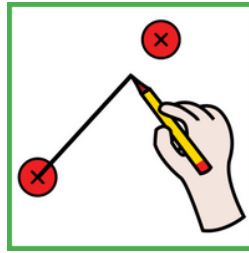
● GIRAFA

● GALLINA

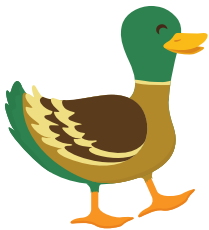




# VOCABULARIO: ANIMALES



PATO



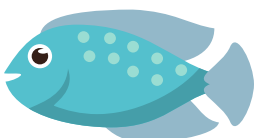
SERPIENTE



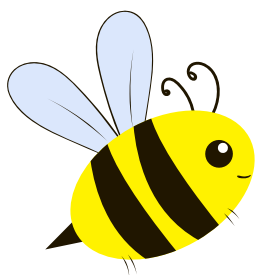
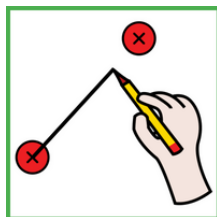
TUCÁN



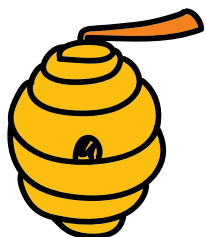
PEZ



OVEJA



ABEJA



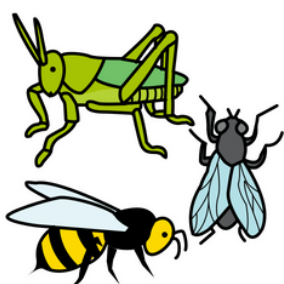
COLMENA



MIEL

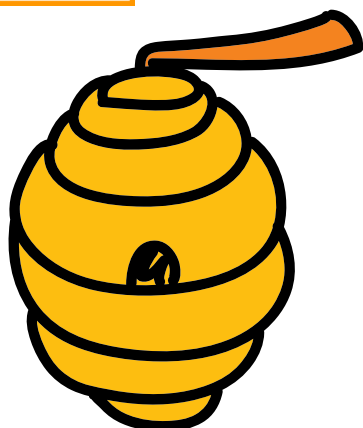


INSECTO

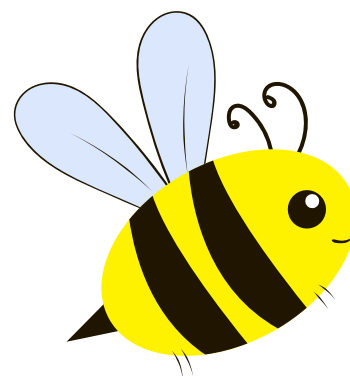


ALAS

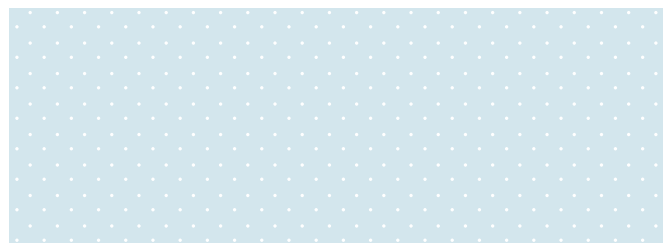




## COLMENA



## ABEJA



## ALAS



## MIEL





# ANIMALES ÁFRICA



# ÁFRICA



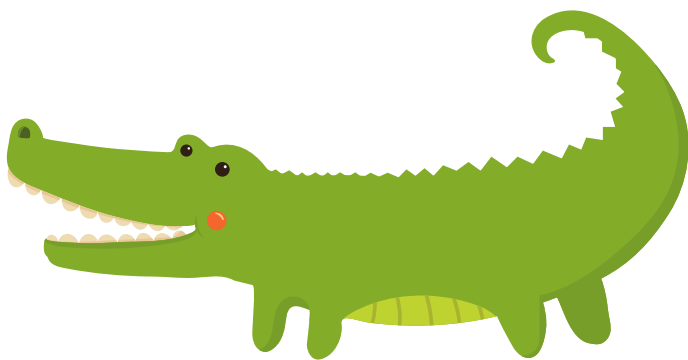
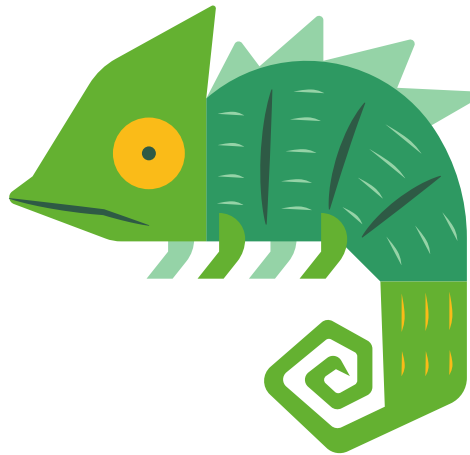
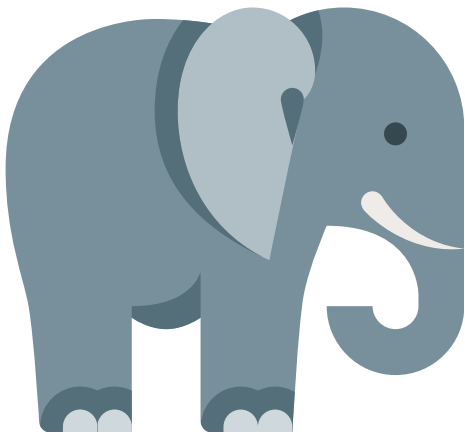
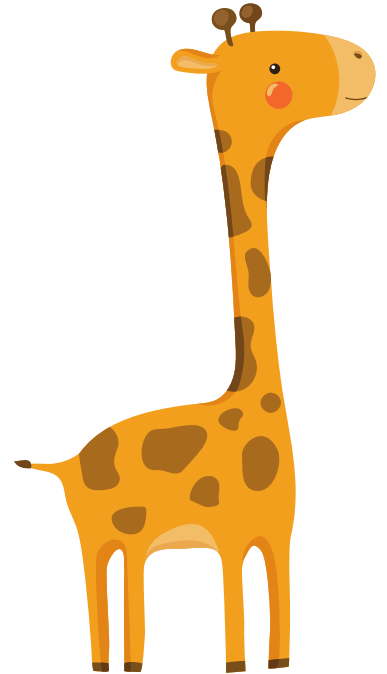
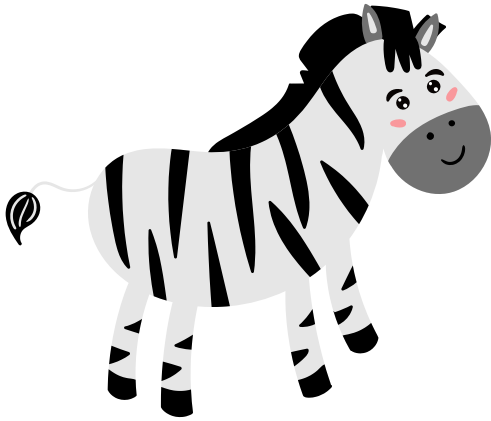


# ANIMALES ÁFRICA





# ANIMALES ÁFRICA



# ÁFRICA



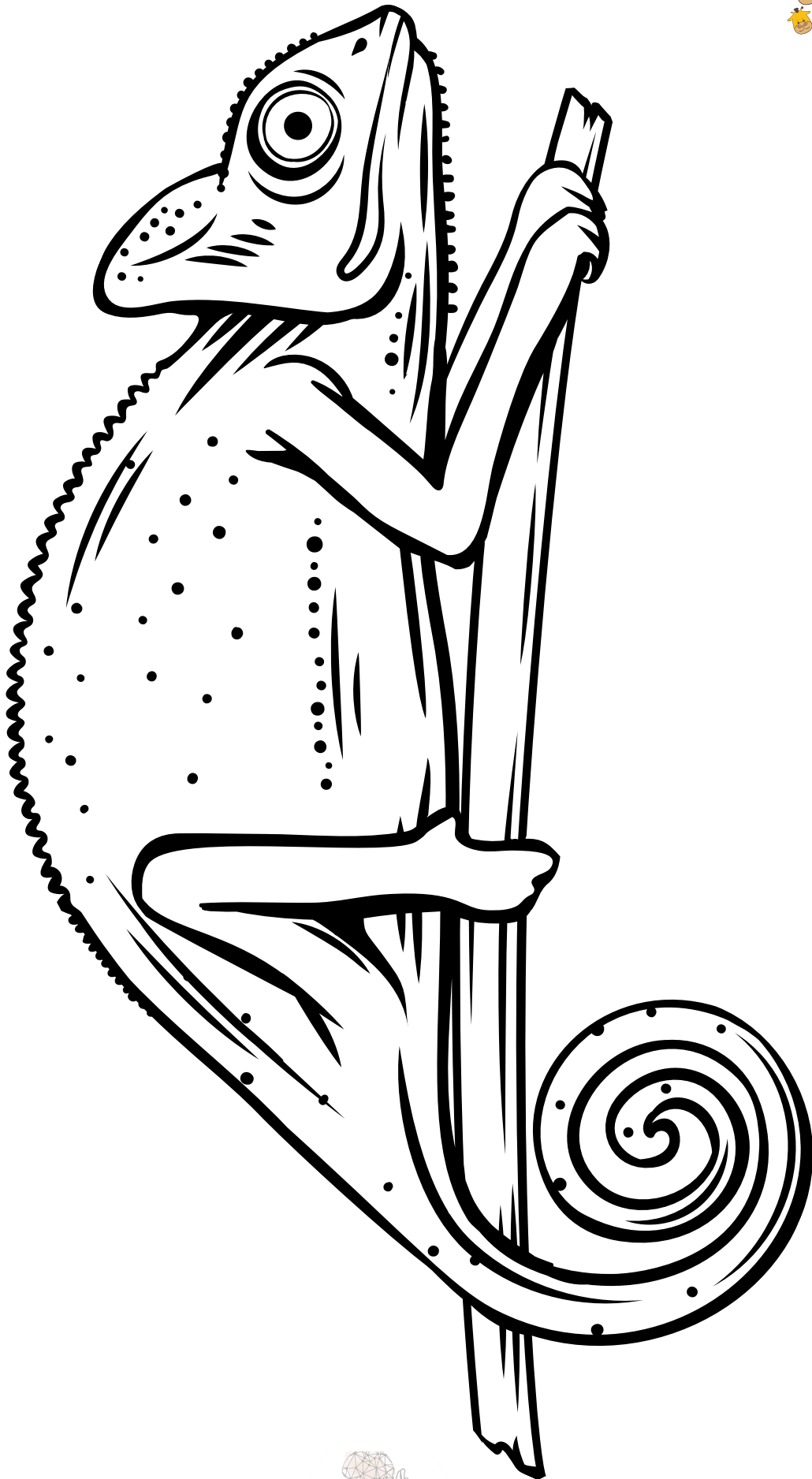


# ANIMALES SALVAJES



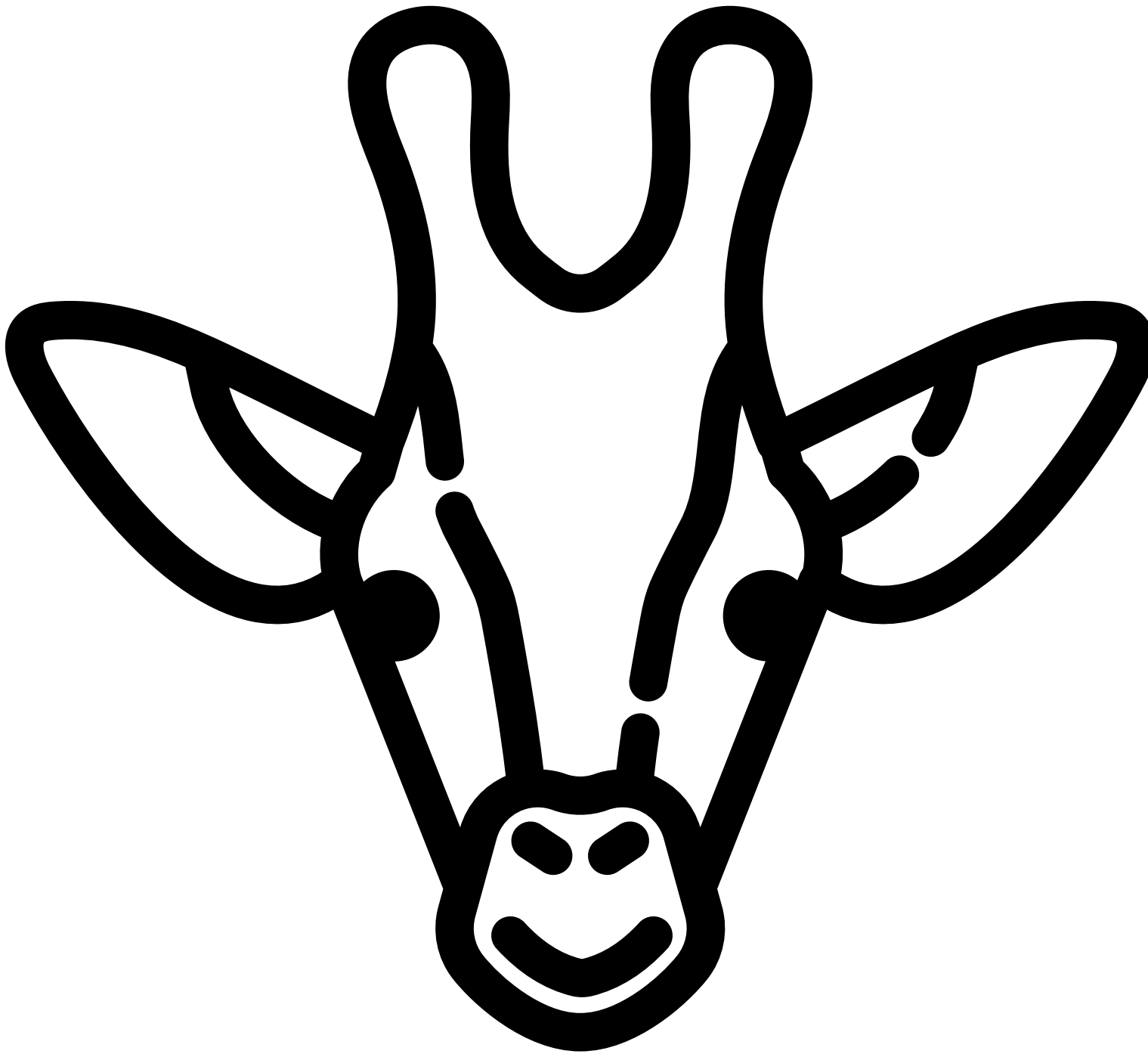


# CAMALEÓN SENSORIAL





# JIRAFA SENSORIAL





# LEÓN SENSORIAL

