

# HALLOWEEN



# ¿QUÉ ES HALLOWEEN?

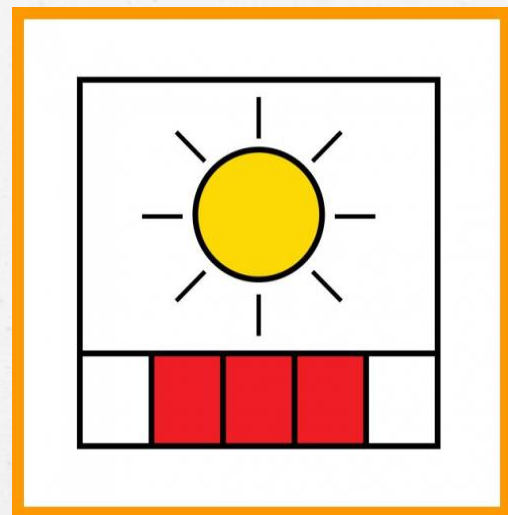
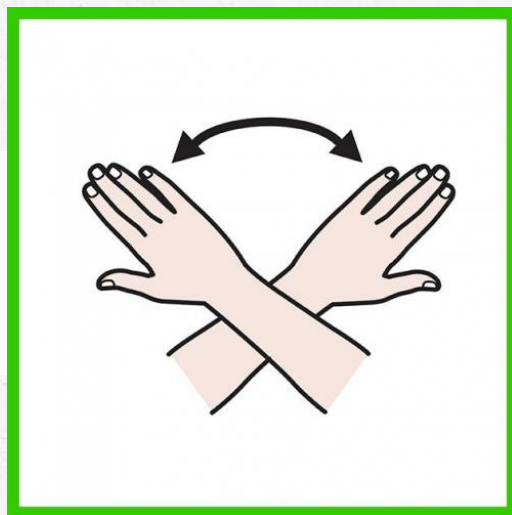
HALLOWEEN ES UNA FIESTA DE IRLANDA



# HALLOWEEN SIGNIFICA FINAL DEL VERANO



=



**H**ALLOWEEN SE CELEBRA EL 31 OCTUBRE



**31**



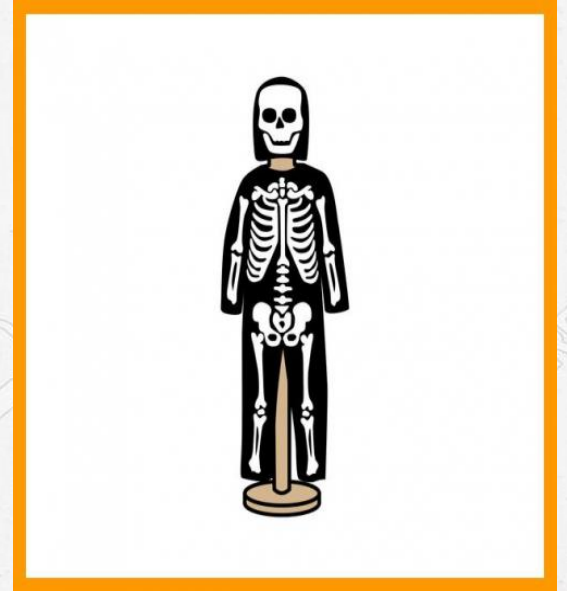
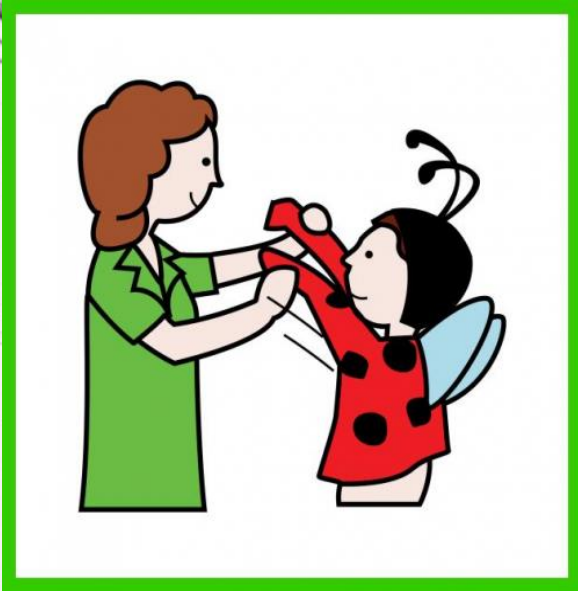
EN HALLOWEEN LAS PERSONAS SE DISFRAZAN.



SE DISFRAZAN

DE BRUJA,

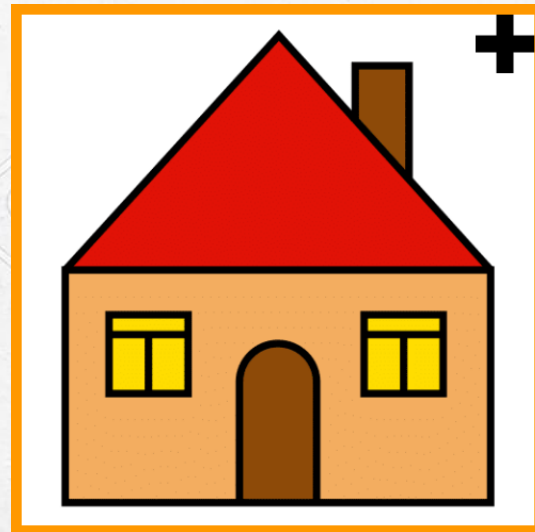
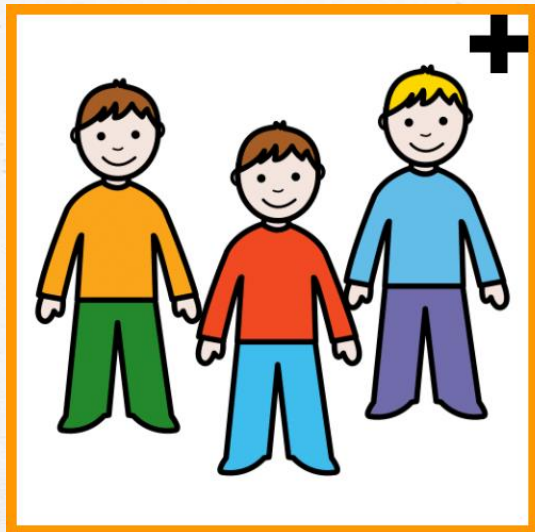
ESQUELETO...



PARA ASUSTAR



LOS NIÑOS LLAMAN A LAS PUERTAS DE LAS CASAS.

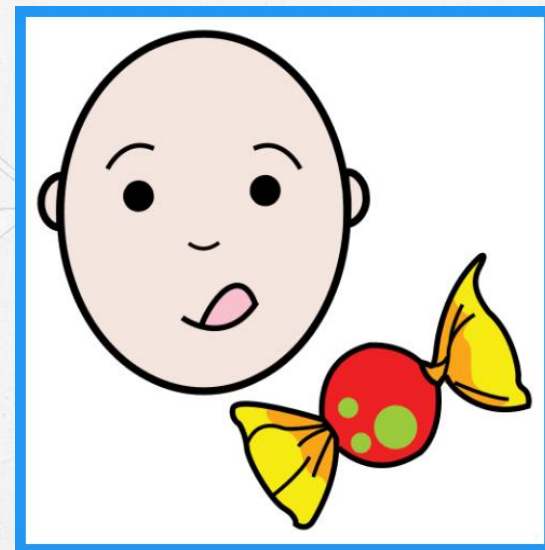
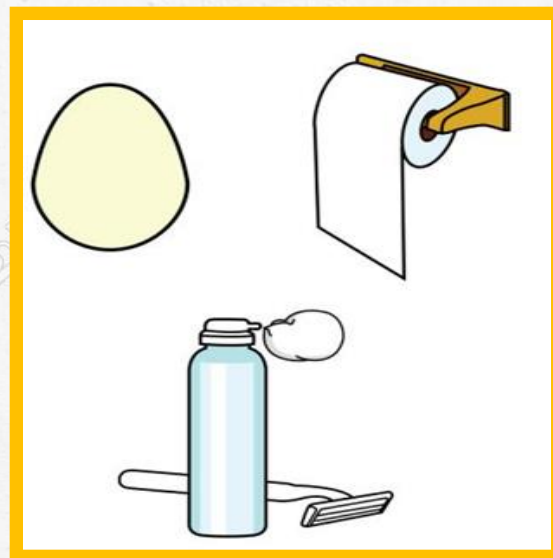
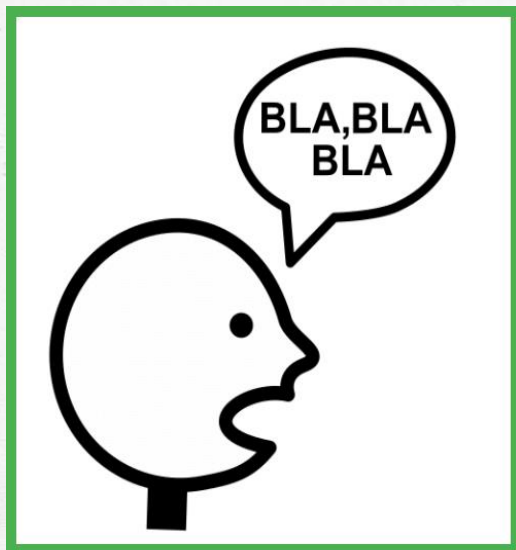


LOS NIÑOS DICEN:

¿TRUCO

O

TRATO?

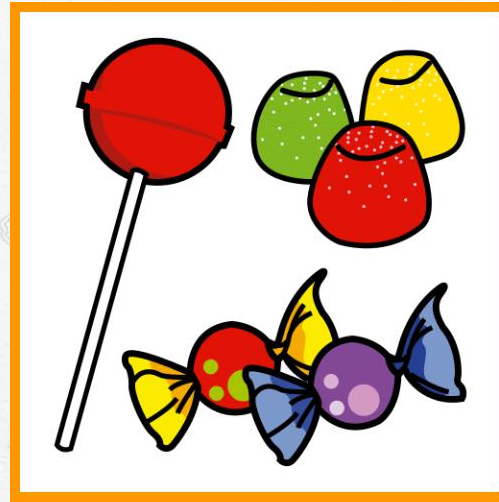
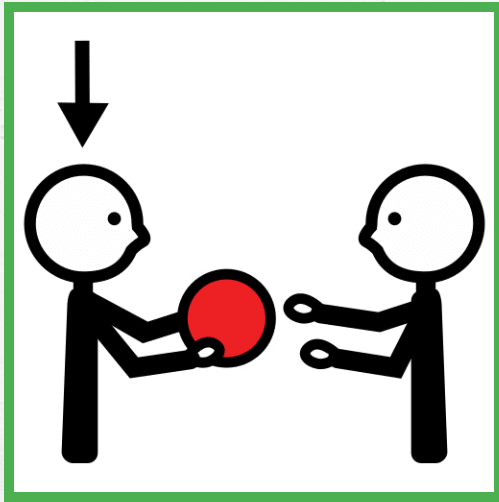


SI LES DAN

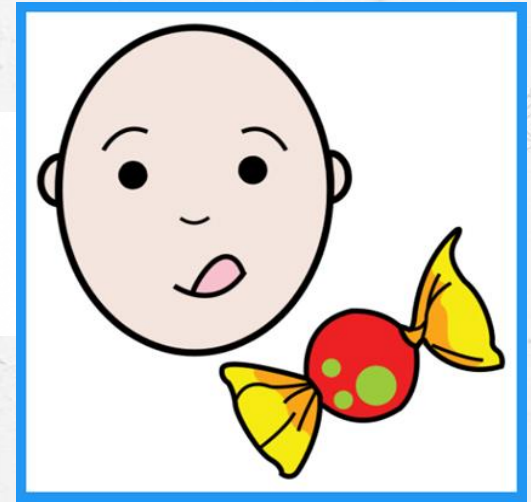
GOLOSINAS

ES

TRATO.



=

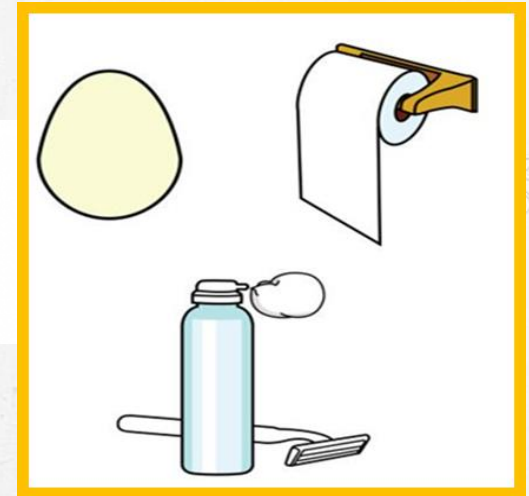


SI NO LES DAN

GOLOSINAS

ES

TRUCO.

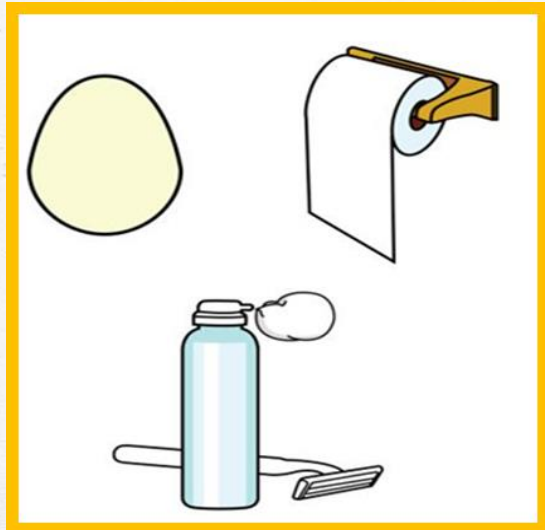


TRUCO

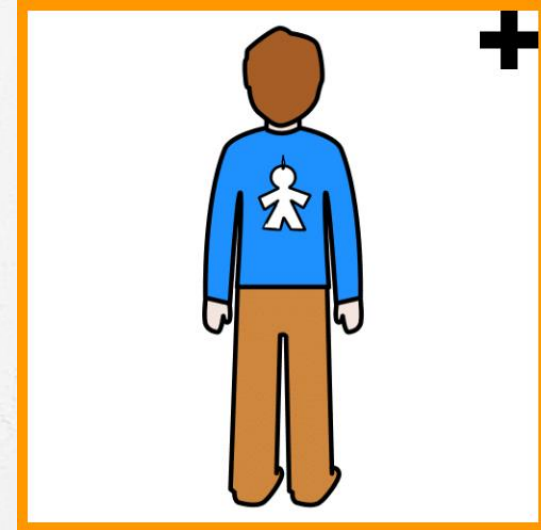
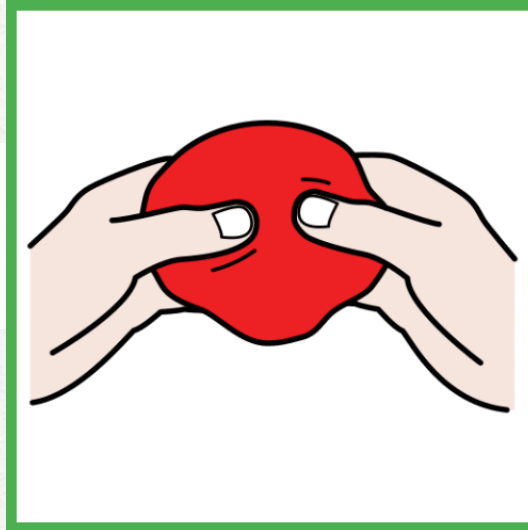
ES

HACER

BROMAS.



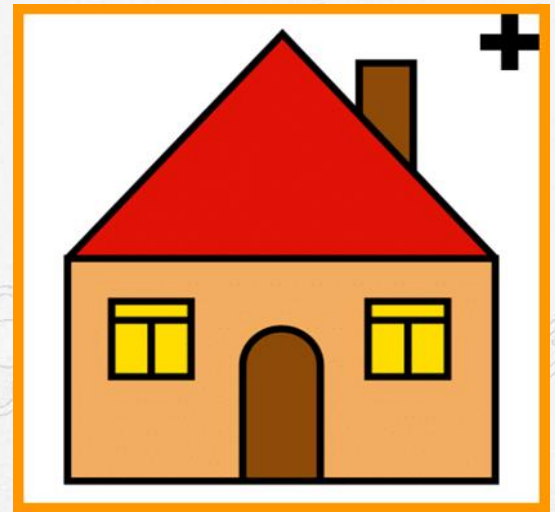
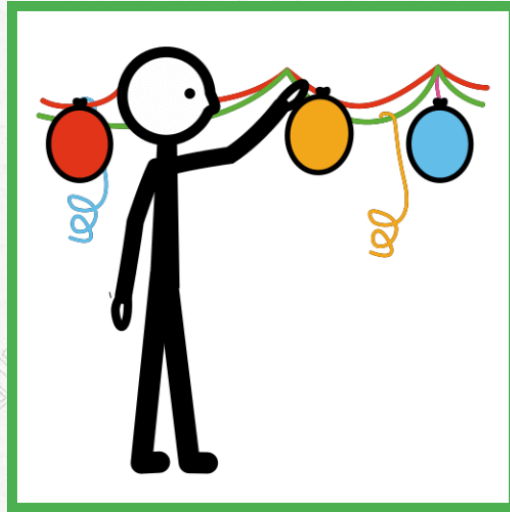
=



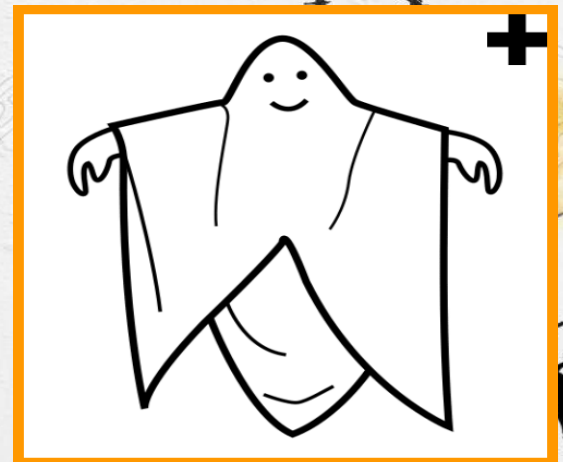
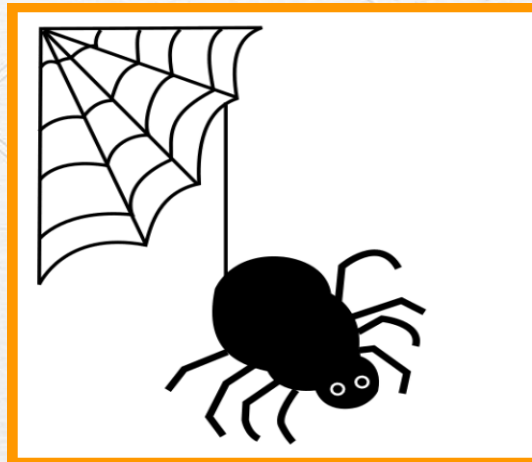
EN HALLOWEEN

SE DECORAN

LAS CASAS



CON CALABAZAS , TELAS DE ARAÑA, FANTASMAS.

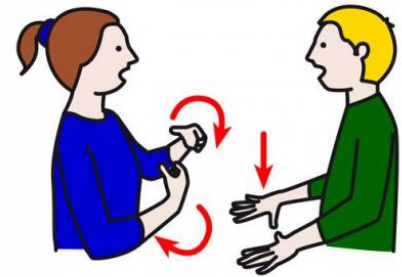


# VOCABULARIO HALLOWEEN Y SIGNOS

casa

**amor**

mano





**H**ALLOWEEN





**F**IESTA





**D**ISFRAZ





**B**RUJA





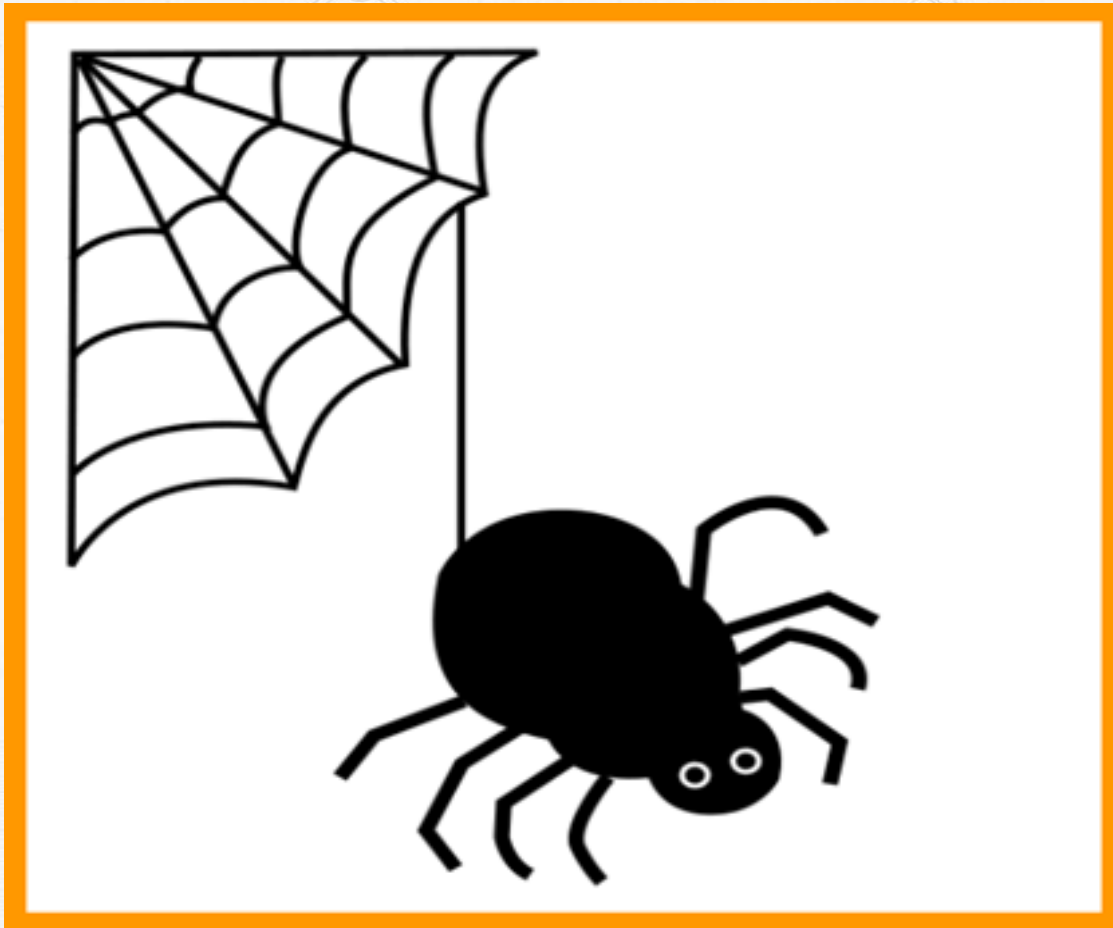
**F**FANTASMA





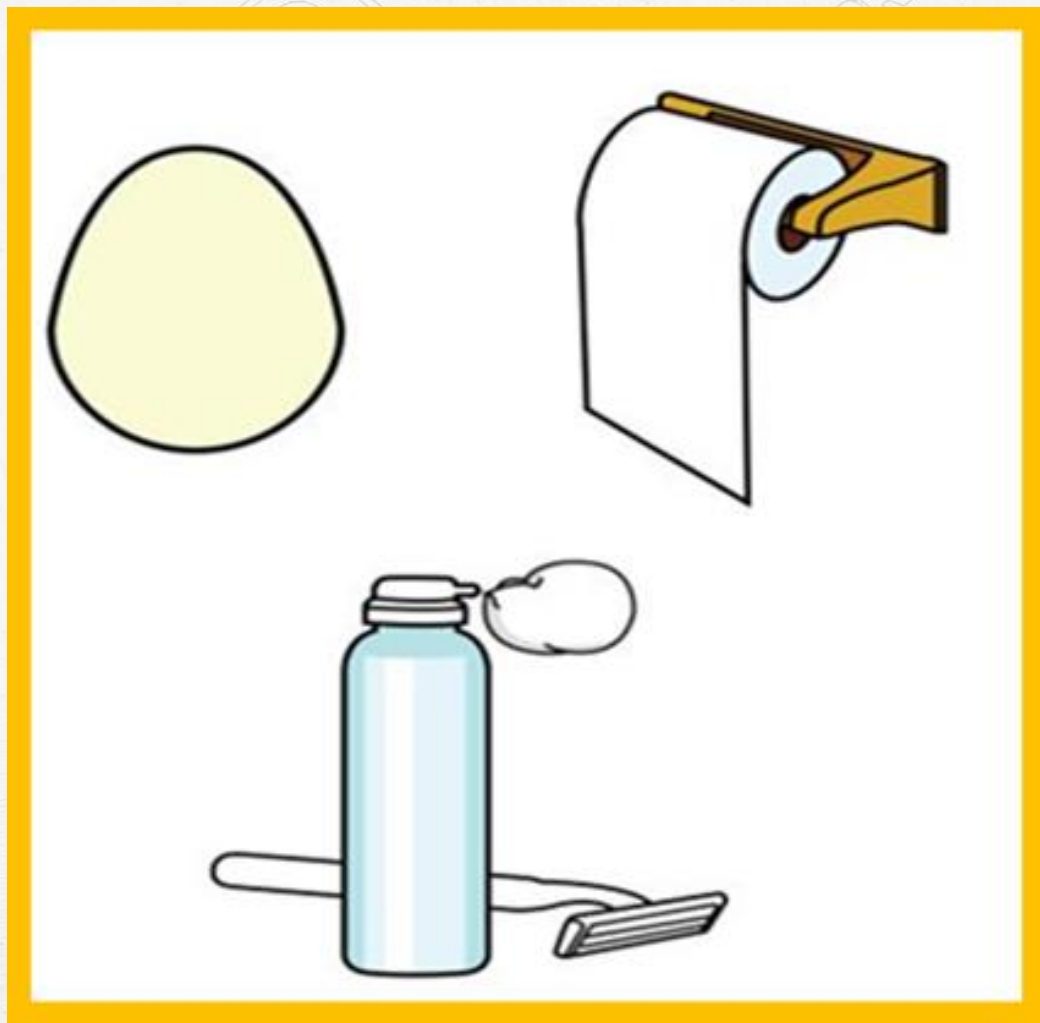
**E**SQUELETO





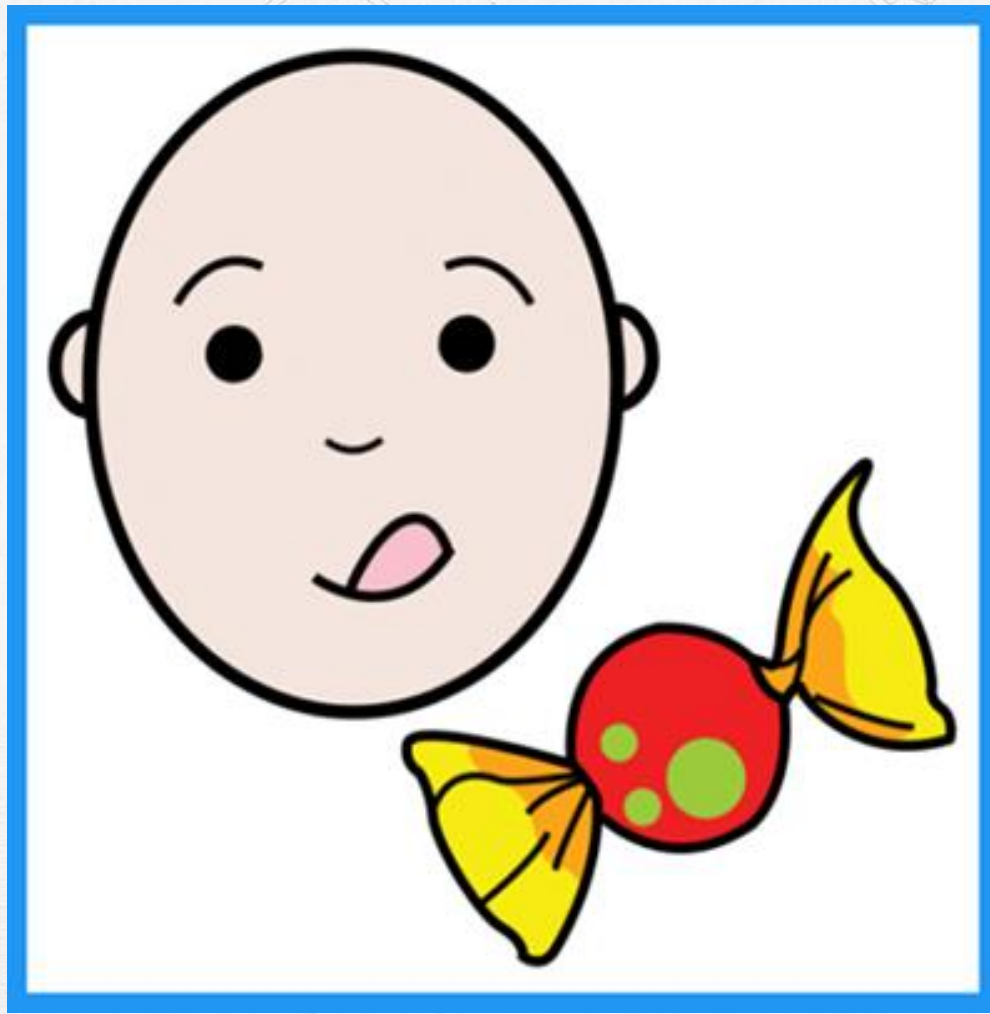
TELA DE ARAÑA





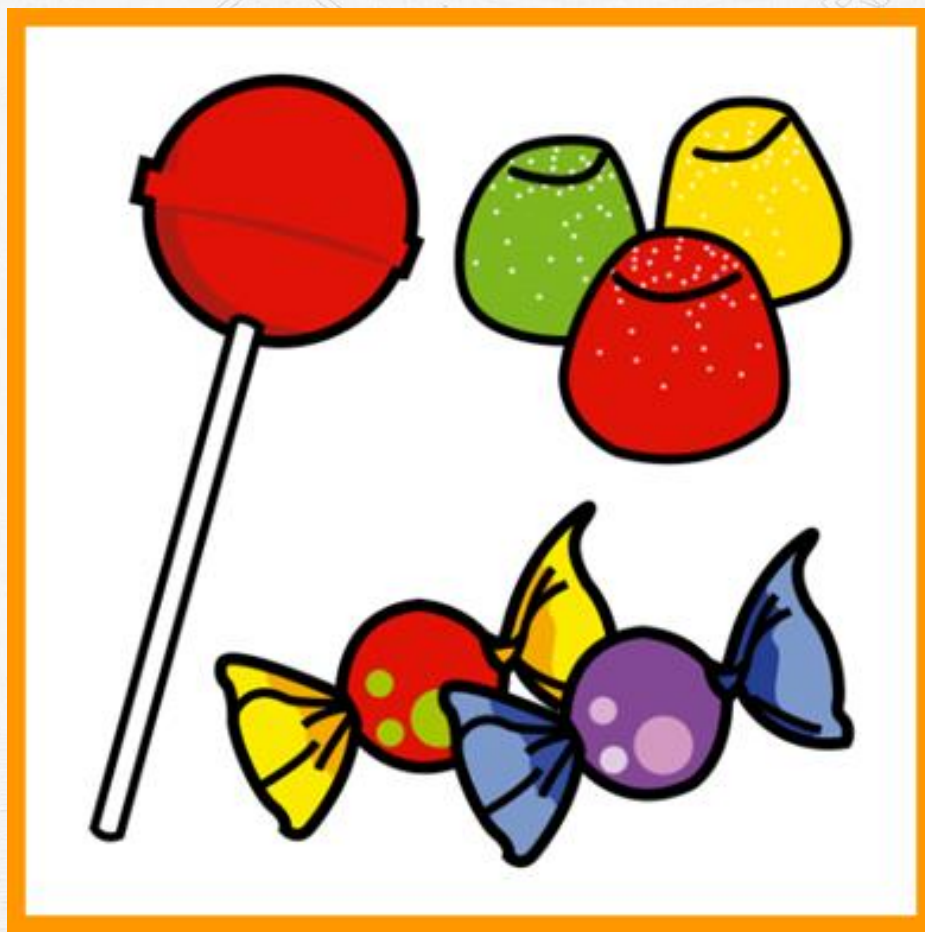
**T**RUUCO





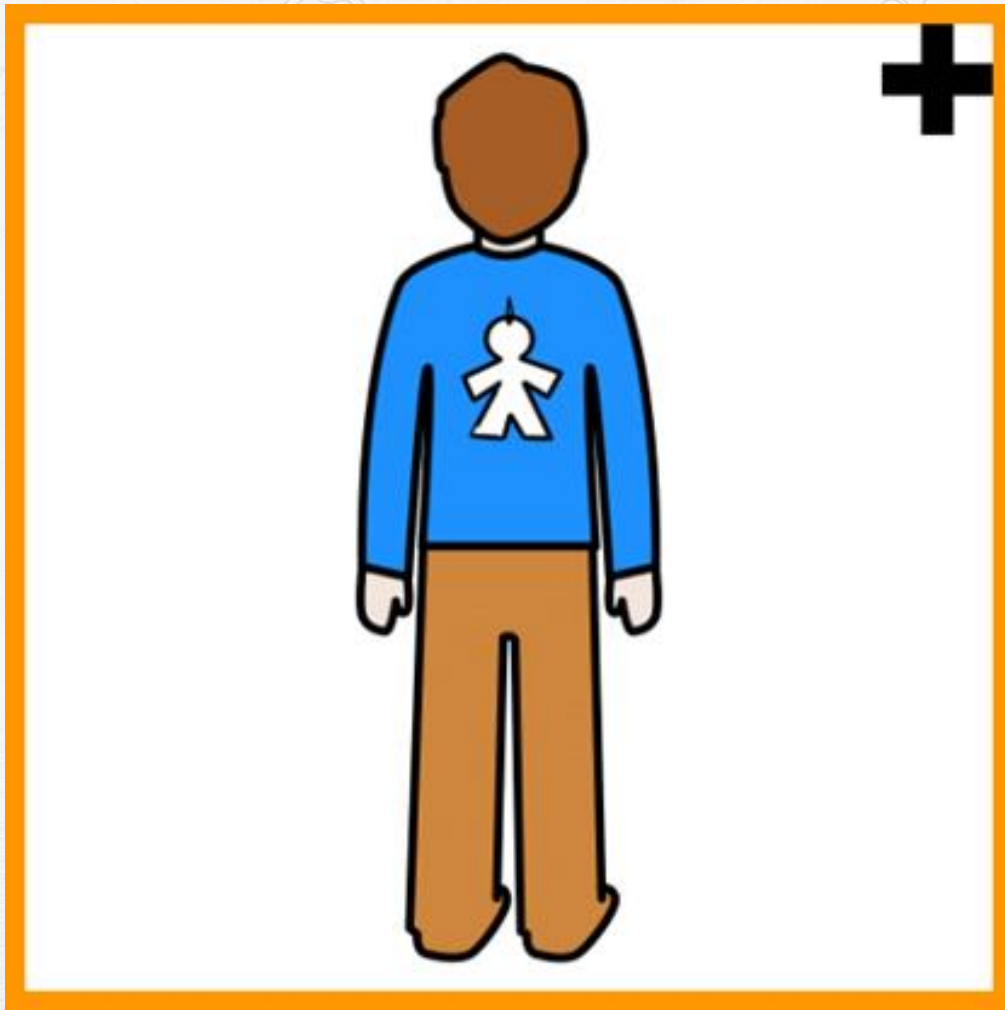
TRATO





**G**OMINOLAS





**B**ROMAS





**D**ECORAR





**A**SUSTAR





# M<sup>a</sup> JESÚS FERNÁNDEZ GUILLÉN (MAESTRA DE PT)

**Los signos son de la página de Arasaac. Los realizados por mí son una adaptación en LSE.**

**Autor pictogramas:** Sergio Palao      **Procedencia:** ARASAAC (<http://arasaac.org>)      **Licencia:** CC (BY-NC-SA)  
**Autora:** M<sup>a</sup> Jesús Fernández Guillén .